



# KCPS UPDATES & 6330 SWOPE PARKWAY REUSE

August 1, 2022



# ENROLL TODAY!

Visit the website

[kcpublicschools.org/enroll](https://kcpublicschools.org/enroll)

Or

**KCPS Board of Education Building**

**2901 Troost Ave**

**Kansas City, Missouri 64109**

**8 AM – 4:30 PM M-F**



## NEW STUDENTS STEPS TO ENROLL:

1. **ENROLL** – KCPS has reduced the amount of initial information on the enrollment form to make the process fast and simple.
2. **ACTIVATION** – Acceptance notifications and Infinite Campus Parent Code are sent to families via email after enrolling; families must activate their account before applying.
3. **APPLY** – All enrolled students can apply for admittance to KCPS Signature Schools or other programs through the Infinite Campus Parent Portal.
4. **ADMIT** – Students are notified via email of admission status within two (2) business days of application. \* †
5. **REGISTRATION** – New students formally accept their seat by entering in **ALL** mandatory information into the Infinite Campus Parent Portal before the deadline.

*\*For some schools, final admission status is not determined until after an Audition or Lottery.*

*†For schools with a waiting list, KCPS uses a lottery system that is **NOT** based on a first-come-first-served system. All students who apply before February 15 have an equal opportunity to be offered a seat.*

**NOTE:** "New Student" is a student that is **NOT** currently enrolled within KCPS or has a sibling enrolled within KCPS.



Learn more at [KCPublicSchools.org/Enroll](https://KCPublicSchools.org/Enroll)

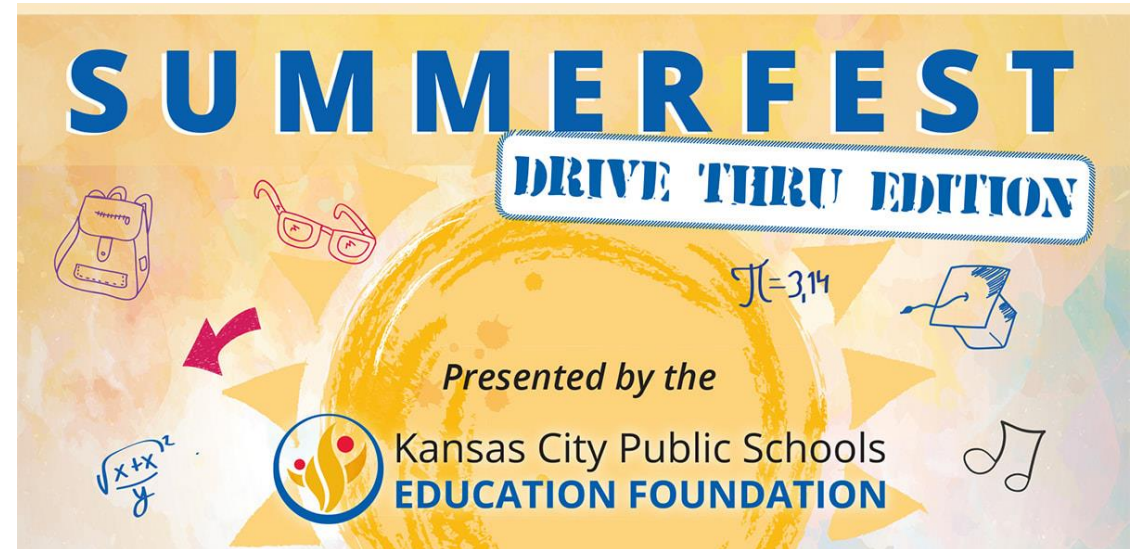
2901 Troost Ave., Kansas City, MO 64109 • (816) 418-7505 • [admissions@KCPublicSchools.org](mailto:admissions@KCPublicSchools.org)

# SUMMERFEST SATURDAY, AUGUST 13, 2022

10 a.m. to 3 p.m.  
Saturday, Aug. 13, 2022  
East High School  
1924 Van Brunt Blvd.  
Kansas City, MO 64127

By pre-registering for this event, KCPS students will be able to get a backpack with [school supplies free of charge](#). Immunizations, COVID-19 vaccines, lead testing and other student health services will also be available on-site.

Register here:  
[kcpublicschools.org/summerfest](https://kcpublicschools.org/summerfest)





# FIRST DAY OF SCHOOL MONDAY, AUGUST 22, 2022

Visit the website [kcpublicschools.org/b2s](https://kcpublicschools.org/b2s) for the following information:

**BELL TIMES**

**UNIFORMS**

**OPEN HOUSE/ORIENTATION**

**SUPPLY LIST**



# NO KIDS? GROWN KIDS? BE A MENTOR!

Visit [kcpublicschools.org/mentoring](https://kcpublicschools.org/mentoring) for more information.

**Success Mentors**  
**Lunch Buddies**  
**Career Mentors**  
**R.I.S.E.**



KCPS invites individuals and organizations to come on board to serve in the mentoring mission.



## ✓ **APPLY**

Applying is fast! Visit us online at [www.kcpublicschools.org/mentoring](https://www.kcpublicschools.org/mentoring)



## **ATTEND TRAINING**

All applicants will attend an initial two-hour, pre-match training.



## ✓ **PROVIDE REFERENCES**

All references will be checked to verify accurate information on each applicant.



## **COMPLETE BACKGROUND CHECK**

Each applicant is required to complete and pass a background check. This process can take 7-10 business days.



## ✓ **GET MATCHED**

Once all steps have cleared, mentors will be matched with a mentee who has similar interests. A detailed welcome letter will outline onboarding steps.

# ACADEMIC PROGRESS

## AC Prep, Banneker, Hartman, Holliday Montessori and Troost

Of the schools with the majority of attendance zone within the 5<sup>th</sup> district, **ALL FIVE SCHOOLS increased the percentage of students meeting typical growth for MATH AND READING as measured by iReady.** (Banneker, Holliday, and Troost all gained more than 15% in one year)

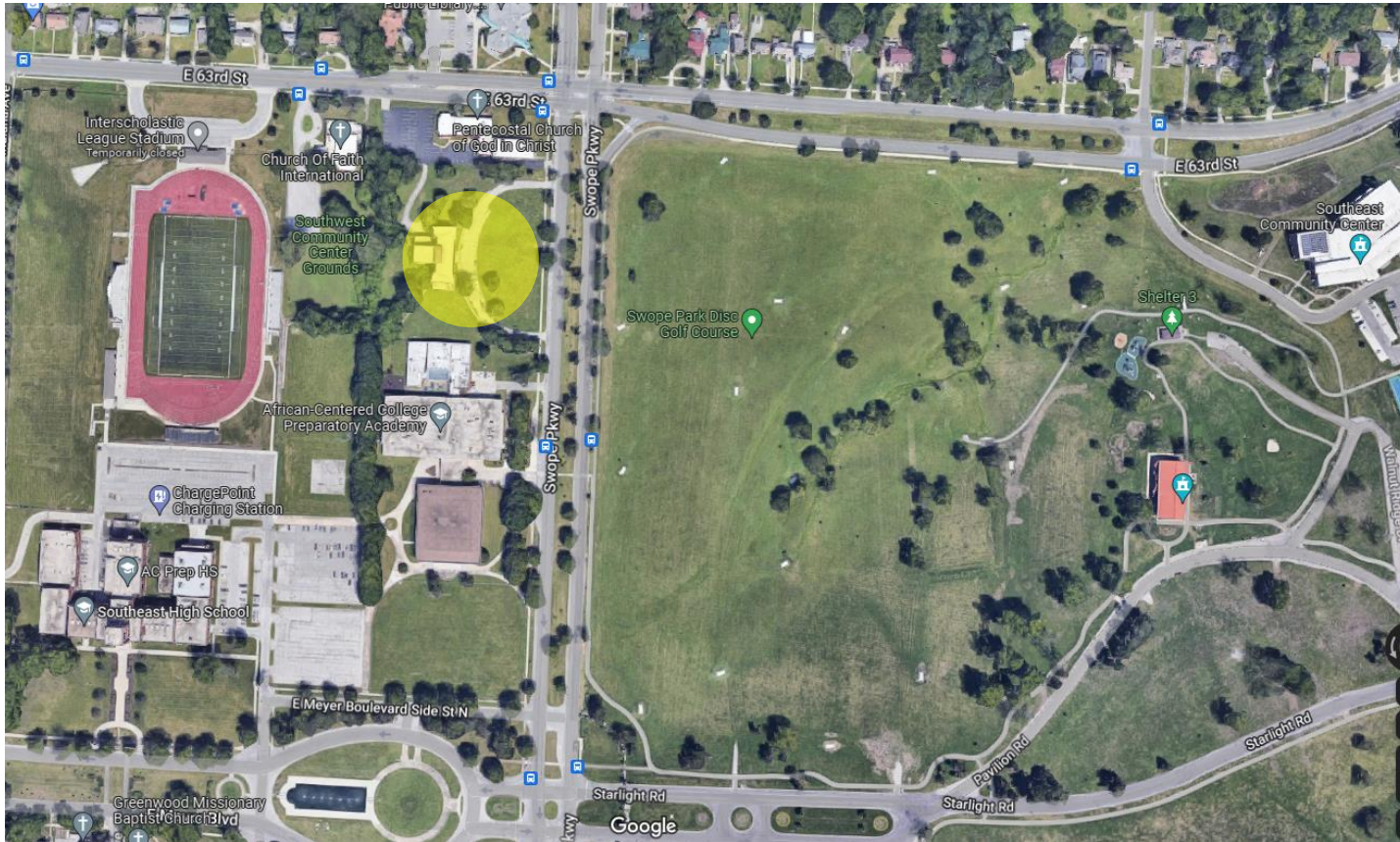
## Southeast High School

**The four-year graduation rate continues to climb.**  
It increased from 62.4% in SY19 to 74.6% in SY21.





# 6330 SWOPE PARKWAY SITE REUSE



Aerial view



View from Swope Parkway

- Names: 6<sup>th</sup> Grade Center, Southeast Annex, Girls' Home
- Currently vacant (≈10 years)
- Declared “mothballed”

# SHARED PARCEL WITH TWO EXISTING SCHOOLS

The site is shared with two existing KCPS schools Southeast High School (grades 9-12) and African-Centered College Preparatory Academy (grades PK-8). The shared site includes about 34 acres of land. While this is the largest parcel owned by KCPS, **it is far below national school siting standards.**

New high schools are built on approximately 50 acres of land.  
New elementary schools are built on 20+ acres.

Minimum guidelines followed by most states\*:

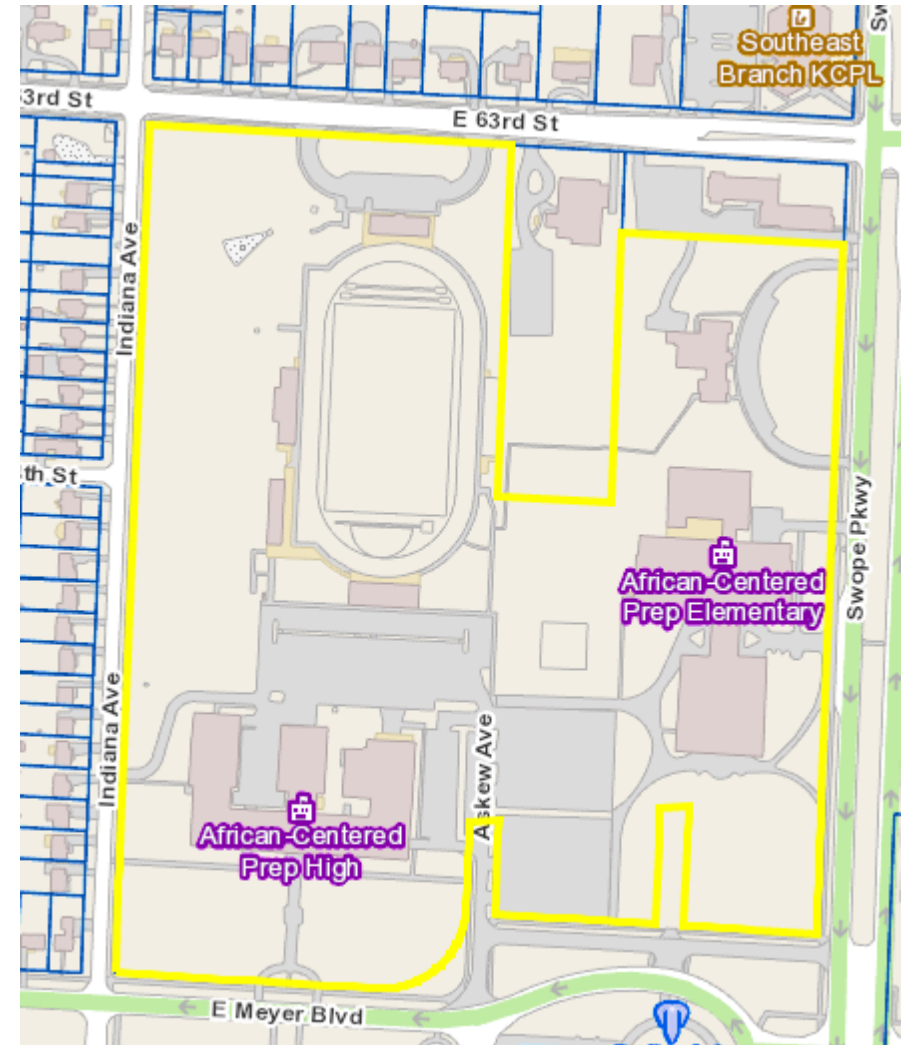
Elementary Schools = 10 acres plus 1 acre for every 100 students

Junior High/Middle Schools = 20 acres plus 1 acre for every 100 students

Senior High Schools = 30 acres plus 1 acre for every 100 students

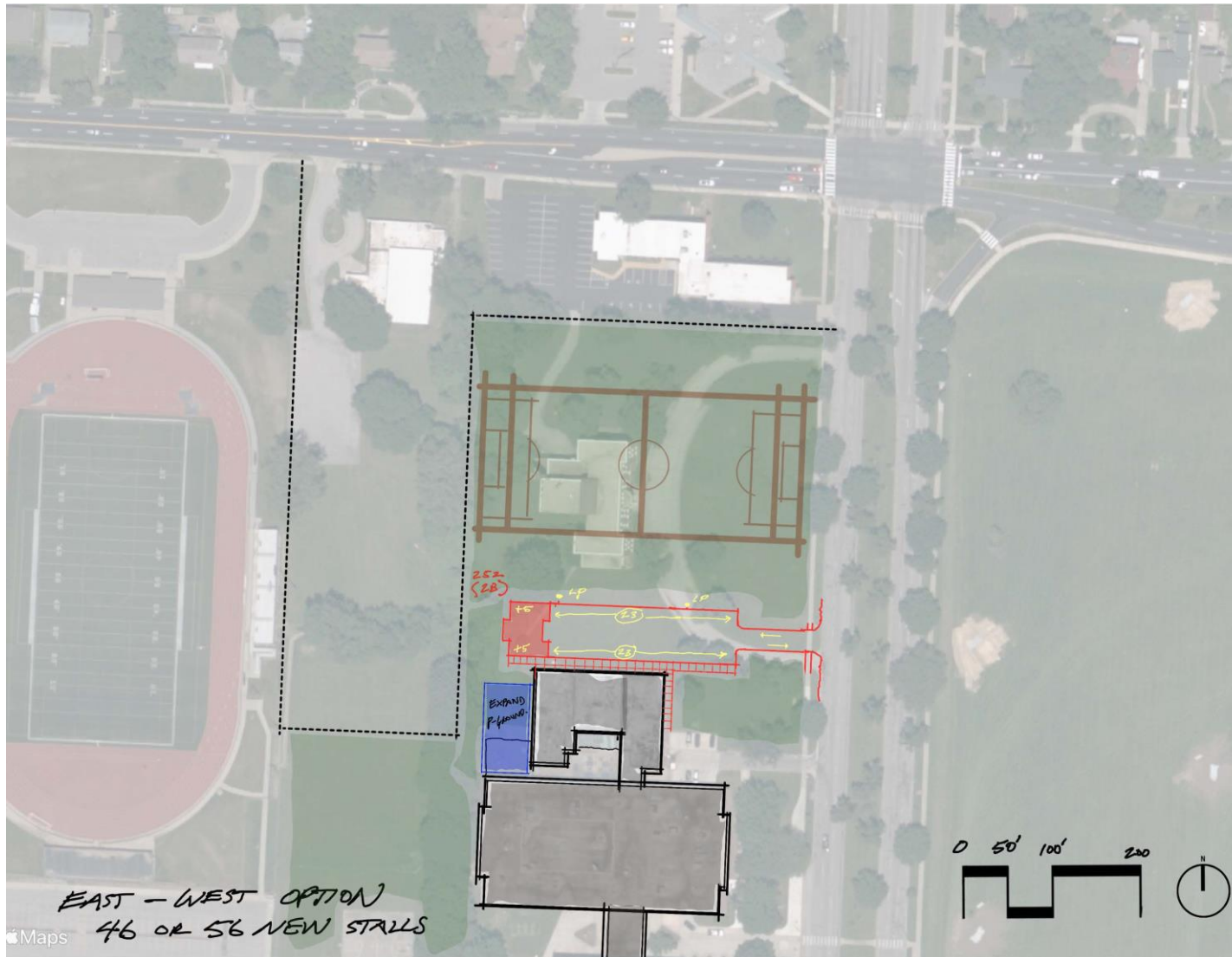
*Council of Educational Facility Planners International (CEDFI)*

\*Missouri does not have a minimum school site standard, but references guidelines set by CEDFI.





# POSSIBILITIES FOR SITE REUSE



Although the district does not need the building, we will need the site.

Possible reuses include:

- Soccer field
- Football field
- Other athletic field
- Athletic field and staff parking

KCPS is currently embarking upon a planning initiative called Blueprint 2030.

**The site will be part of the long-term vision for the Southeast High/African Centered College Preparatory Academy site.** As we continue planning, we will define reuse that best supports the academic vision of Blueprint 2030.

# WHAT IS BLUEPRINT 2030?

**Blueprint 2030 is a plan to  
increase academic achievement and  
enhance the student experience**

It is the vision for education in Kansas City with 2025 and 2030 goals. It will serve as the update to the current KCPS Strategic Plan.

Blueprint 2030 will be continuously monitored and updated after the first 5 years to ensure we are on track to achieve the vision.



# WE NEED MORE \$ IN CLASSROOMS

## 2019-20 Percentage of Total Expenditures on K-12 Instruction Compared to Peers

Independence	23.13%
KCPS	23.38%
Raytown	23.67%
Blue Springs	27.08%
NKC	27.49%
Lee's Summit	32.37%
Grandview	34.82%

## 2019-20 Percentage of Total Expenditures on Operations Costs\* Compared to Peers

Blue Springs	12.25%
Independence	14.41%
Lee's Summit	14.55%
NKC	14.55%
Raytown	15.74%
Grandview	18.39%
KCPS	27.70%

\*Operations Costs include: Student Transportation, Food Services, Security Services and Operation of Plant

# 6330 SWOPE PKWY ANNUAL COSTS

In a recent year, KCPS spent **\$49,277** on holding costs for 6330 Swope Parkway.

\*This includes insurance, utilities, groundskeeping, and maintenance. This does not include cost of Security.





# KCPS IS EXPLORING DEMOLITION

Memories of the school you would like to share?

Questions or comments?

How can we ensure that we are a good neighbor during any demolition or site work?