

Kansas City Public Schools and Department of Elementary and Secondary Education

January 26, 2017



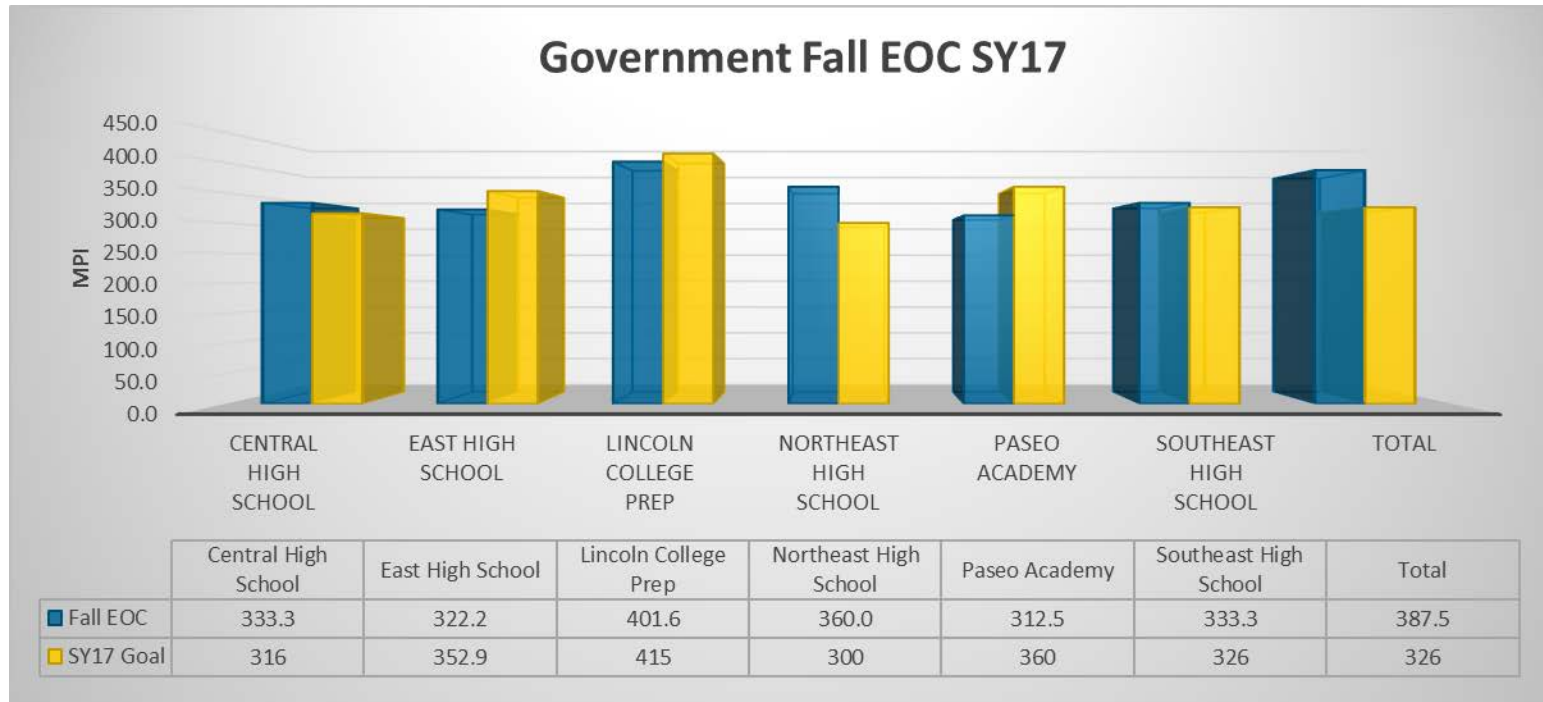
Update on the District's SY 17 Academic Goals

Dr. Vickie Murillo



American Government EOC - Winter SY17

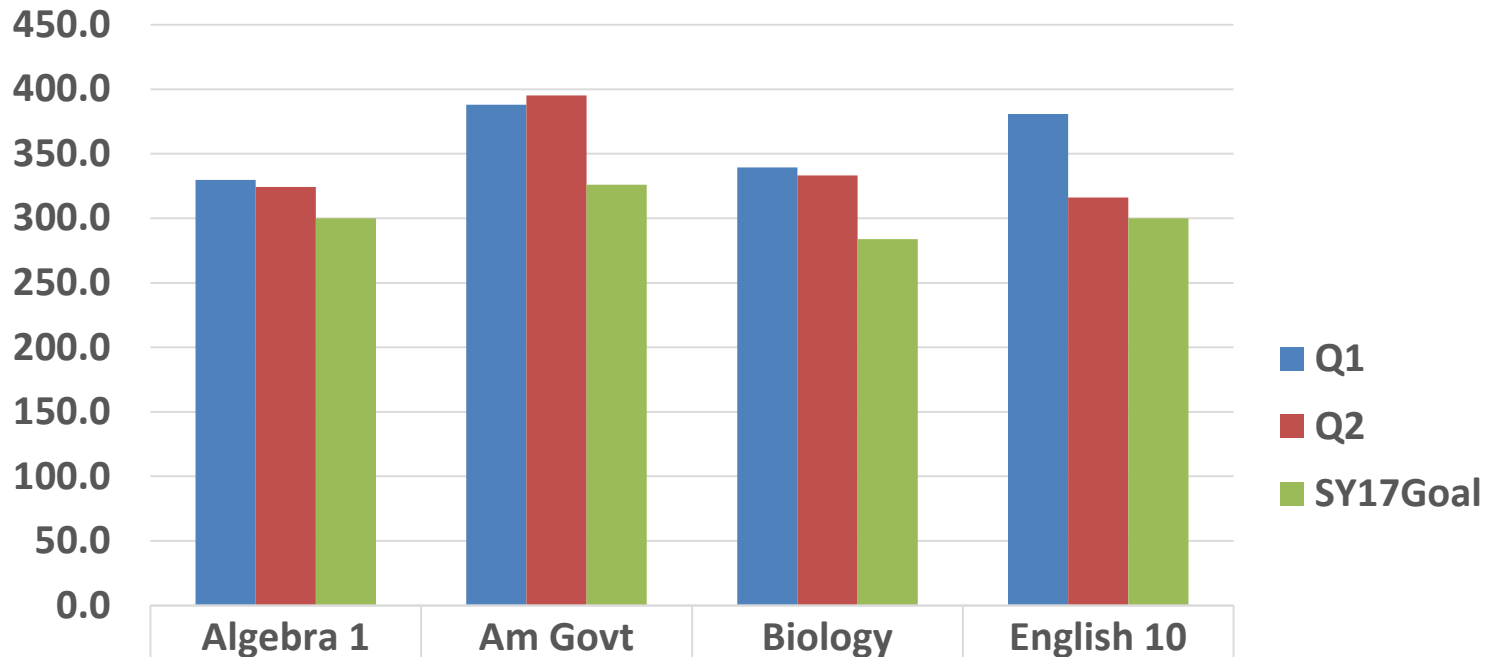
1. Academic Achievement	Points Poss	Points Earned SY16 APR	SY15 MPI	SY16 MPI	Score Needed	Points Earned		
						Status	Progress	Total
Social Studies	8	8	304.7	318.8	326	5	6	8



	Central	East	LCP	NE	Paseo	SE	KCPS
# Tested	6	9	129	5	8	3	160

2nd Quarter MOC EOCs

KCPS MOCK EOC

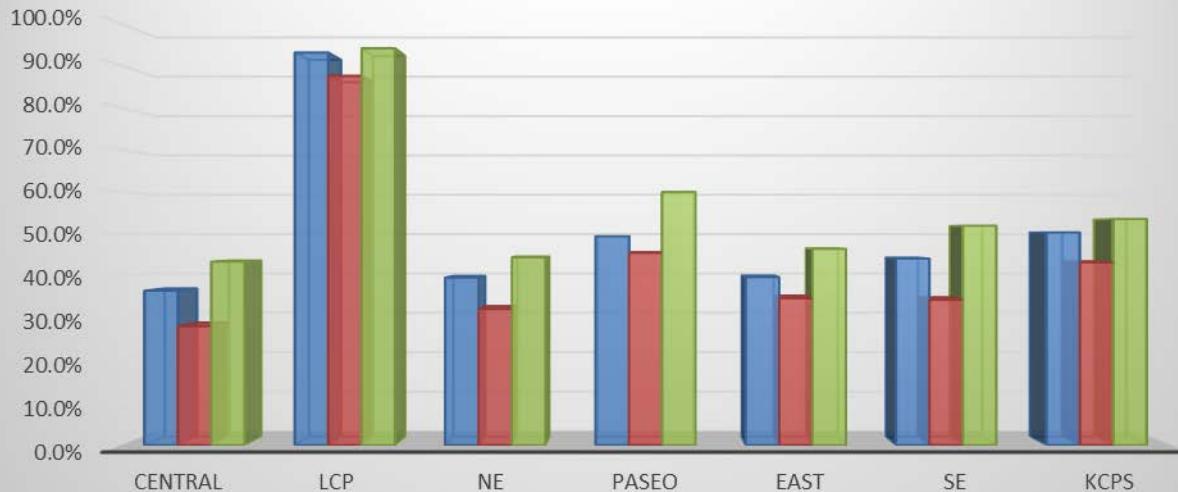


■ Q1	329.9	388.01	339.5	380.82
■ Q2	324.3	395.2	333.2	316.1
■ SY17Goal	300	326	284	300

MSIP5 Standard 3.1-3* (ACT, ASVAB, etc.)

3. College and Career Ready	Points Poss	Points Earned		SY15 Score	SY16 Score	% Needed	Status	Progress	Total
		SY16 APR	SY16 APR						
3.1-3* (ACT®, SAT®, COMPASS® or ASVAB®)	10	6		47.9	50.4	53.6	6	2	8

3.1-3 Advanced Placement



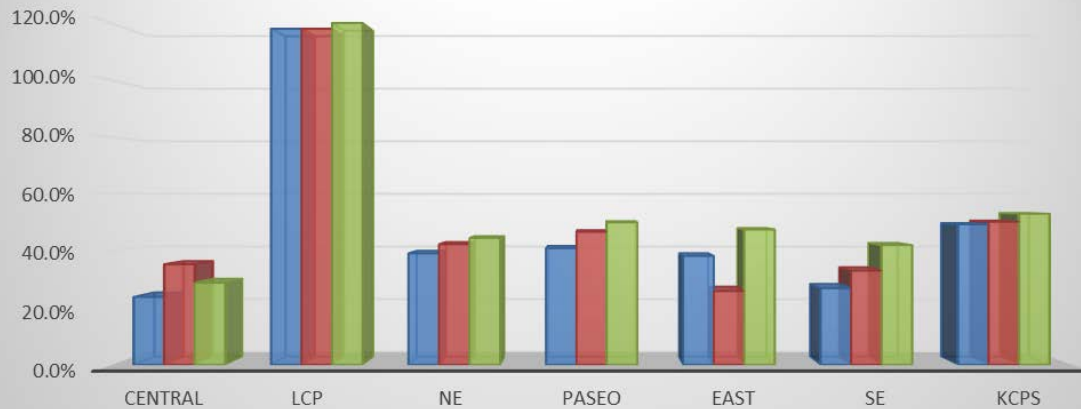
	Central	LCP	NE	Paseo	East	SE	KCPS
SY16	36.6%	93.0%	39.7%	49.5%	39.8%	44.2%	50.4%
Current	28.2%	87.5%	32.3%	45.6%	34.8%	34.4%	43.3%
SY17 Goal	43.5%	94.0%	44.5%	60.0%	46.5%	52.0%	53.6%

- Calculation includes all seniors, including MO Options, Anderson and Early College.
- There are currently 103 (12%) seniors without a valid CCR Assessment score on file.
- Final CCR Assessment scores will be completed by May 15th.
- KCPS currently has strong enough scores to maintain six status points.

MSIP5 Standard 3.4* COLLEGE AND CAREER READINESS - AP, IB, Dual Credit, TSA or Early College

3. College and Career Ready	Points Poss	Points Earned SY16 APR	SY15 Score	SY16 Score	% Needed	Status	Progress	Total
3.4* COLLEGE AND CAREER READINESS - AP, IB, Dual Credit, TSA or Early College	10	10**	41	49.3	53	10**	2	10

3.4 Advanced Placement



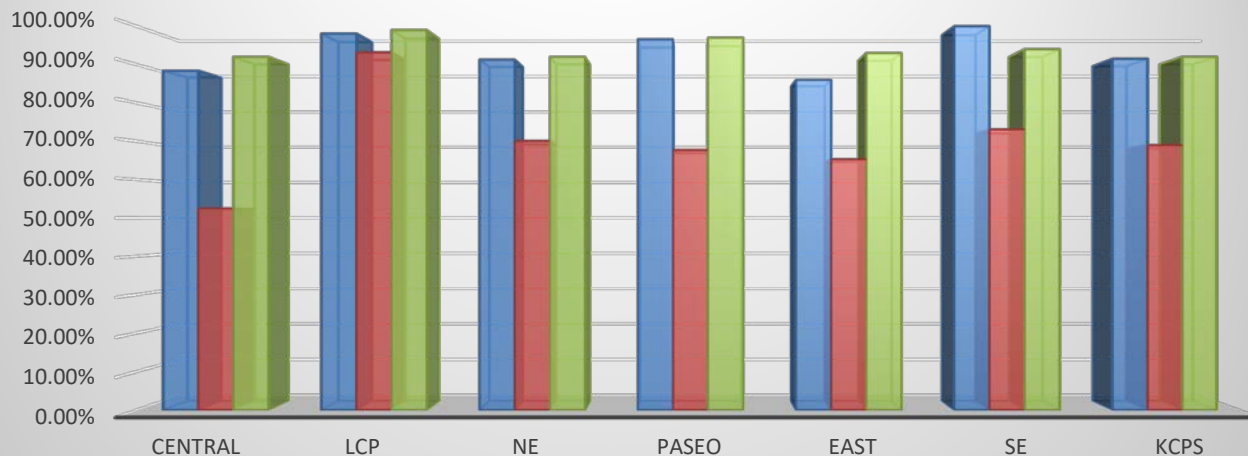
	Central	LCP	NE	Paseo	East	SE	KCPS
SY16	23.8%	118.0%	39.1%	40.9%	38.2%	26.9%	49.3%
Current	35.3%	118.0%	42.3%	46.7%	25.9%	33.0%	50.2%
SY17 Goal	28.8%	120.0%	44.5%	50.0%	47.5%	42.0%	53.0%

- Current data includes seniors who passed an approved advanced course in SY16 and students who are currently enrolled in an advanced course.
- Students enrolled this year must earn at least a “B” to be counted for MSIP calculation.
- The current calculation includes students projected to pass their TSA/IRC for SY17. For SY16, CTE students passing their TSA/IRC accounted for approximately 20% of the final score for Standard 3.4*.
- Preliminary calculations based on the proportion of previous years TSA scores and current data have the KCPS firmly earning 6 status points, with a strong chance of meeting the goal of 53%.

MSIP5 Standard 3*5-6 Postsecondary Placement

3. Collge and Career Ready	Points Poss	Points Earned SY16 APR	SY15 Score	SY16 Score	% Needed	Points Earned		
						Status	Progress	Total
3.5*6 Placement	10	10	89.9	91.5	92	10	2	10

3.5-6 Postsecondary Placement



	Central	LCP	NE	Paseo	East	SE	KCPS
SY16	88.40%	98.10%	91.30%	96.60%	86.00%	100.00%	91.50%
Current	52.5%	93.2%	70.1%	67.7%	65.3%	73.1%	69.0%
SY17 Goal	92.0%	99.0%	92.0%	97.0%	93.0%	94.0%	92.0%

- Placement data includes two and four year positive matches with the National Student Clearinghouse, as well as positive CTE placements.
- The CTE department is currently conducting the follow up on SY16 Graduates.
- Once the follow up process is complete, KCPS expects to maintain 90% or higher.

MSIP 5 Attendance and Grad Rate Goals

4. Attendance	Points Earned							
	Points Poss	Points Earned SY16 APR	SY15 Rate	SY16 Rate	% Needed	Status	Progress	Total
	10	10	79.5	83	85.6	6	4	10
	APR Subscore							
								10

Questions



Building Level Data – Needs Assessment

Curriculum, Instruction, and Professional Development School Leadership

Dr. Trinity Davis and Dr. Larry Gray



School Evaluations

- Three teams conducted interviews with all 33 sites:
 - Academic Division
 - Human Resources
 - School Leadership
- The areas of focus:
 - Instruction
 - Climate
 - Facilities
 - Budget
- Teachers, students, and leadership teams were interviewed

Instruction

Needs

- Pacing and Benchmarking
- Classroom Libraries
- Math/Science Resources
- Time for Data Analysis
- Behavior interventions
- Google Classroom Training

Solutions

- Decreased testing
- Provide classroom libraries for next year
- Advertised book room at Manual
- Communicate with schools to identify needs
- Provide PD to increase student engagement
- Provide Google professional development

Culture and Climate Needs

Needs

- Onsite Recovery/ISS Room
- Mental Health Support for Staff & Students
 - Trauma training for teachers
 - In-house social worker
- Behavior Intervention Personnel and Procedures
 - More fair and consistent enforcement of policies addressing negative behavior
- More celebration for positive achievements of staff & students

Solutions

- Provided a Behavior Interventionist at Faxon
- Provided professional development for 60 staff members on Youth Mental Health
- Modified the use of the AOSS/ISS
- Provided PD to principals on restorative justice practices
- Improved the frequency of attendance incentives for students
- Implemented a staff and student of the month recognition program

Questions



Creating Supports / Interventions for Tier III Schools & Students

Dr. Luis Cordoba and Ms. Molly Ticknor



Office of Student Intervention Goals

- To improve KCPS district culture that promotes Trauma Sensitive Practices throughout all systems.
- To improve and create systems that focus on prevention and overall student and staff wellness.
- To maintain a strengths-based, student-centered framework to build-up protective factors that support socio-emotional wellness for students and families.



KCPS Socio-Emotional Support Model

Effective Systems of Care

- Appropriate Information Sharing
- Continuous and effective communication
- Supportive navigation through all Systems of Care
- Wraparound support across all departments
- Family Driven and Student- Guided

Tier III

Counseling, Therapy, or Psychiatric Support
Safety/Crisis Plans with Re-Entry Plan
Streamline Referral and Follow-up Processes
Deepened Collaboration with Students, Families, & Community Partners

Tier II

Early Identification, Screening & Progress Monitoring (PST, onsite supports)
Effective Group Interventions
Student Success Plans
Co-Planning Strategies with Students, Families, & Community Partners (student-driven)

Tier I

Promote Relationship Building
Foster Resiliency
Rich Socio-Emotional Learning Embedded into Daily Practice
Trauma Sensitive Practices, Procedures, & Protocols
Mental Health & Wellness Education

Implementation

- Phase I
 - Increase ability to meet student socio-emotional needs across the District – beyond the 3 TSS Pilot Schools
- Phase II
 - Replicate TSS Model / Interventions further across the District
- Phase III
 - Increase ability to serve more Tier III students

Support Needed

- Open communication and effective collaboration across all systems
- Efficient system to collect and analyze data across all departments
- Advocacy for system education reform to include socio-emotional learning into curriculum

Questions



Strategic Plan Update

Dr. Mark Bedell and Mr. Jesse Lange

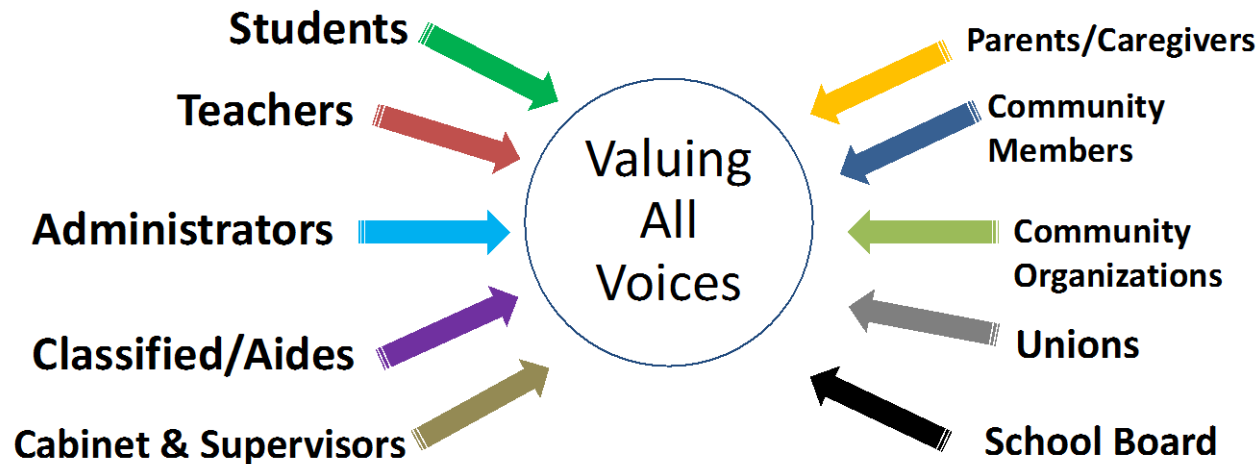


Strategic Plan Update

me direction.

Strategic Plan Update

Embracing Diverse Voices & Perspectives



Meaningful Engagement *strengthens* understanding, appreciation and commitment!

Strategic Plan Update



Embracing Diverse Voices

Student Voice Team

Core Planning Team

Alignment Team

Community Forums

Superintendent's Team

Instructional Focus Team



Strategic Plan Update

Day	Date	Time	Team/Focus	
W	Jan 18, 2017	12:00PM – 3:00PM	Student Voice	<ul style="list-style-type: none"> Conversation with cross-section of students to solicit their perspectives about their educational experiences. A 75-90-minute session with Middle School students and a separate one with High School students.
Th	Jan 19, 2017	8:00AM – 3:30PM	Core Planning Team	<ul style="list-style-type: none"> Representatives of <u>all</u> community stakeholder groups
F	Jan 20, 2017	8:00AM – 3:30PM	Core Planning Team	<ul style="list-style-type: none"> Representatives of <u>all</u> community stakeholder groups
M	Feb 6, 2017	8:00AM – 3:30PM	Core Planning Team	<ul style="list-style-type: none"> Representatives of <u>all</u> community stakeholder groups
Tu	Feb 7, 2017	8:00AM – 3:30PM	Core Planning Team	<ul style="list-style-type: none"> Representatives of <u>all</u> community stakeholder groups
Tu	Mar 28, 2017	12:00PM – 3:30PM	Student Voice	<ul style="list-style-type: none"> Conversation with cross-section of students to solicit their perspectives about their educational experiences. A 75-90-minute session with Middle School students and a separate one with High School students.
Tu	Mar 28, 2017	5:30PM – 7:30PM	Community Forum	<ul style="list-style-type: none"> Two concurrent "Reality Check" sessions – at 2 high schools; open to <u>all</u> KC residents
W	Mar 29, 2017	8:00AM – 3:30PM	Instructional Focus Team	<ul style="list-style-type: none"> Principals, Teachers, C&I Dept, Instructional Coaches, etc.
W	Mar 29, 2017	5:30PM – 7:30PM	Community Forum	<ul style="list-style-type: none"> Two concurrent "Reality Check" sessions – at 2 high schools; open to <u>all</u> KC residents.
Th	Mar 30, 2017	8:00AM – 3:30PM	Instructional Focus Team	<ul style="list-style-type: none"> Principals, Teachers, C&I Dept, Instructional Coaches, etc.
F	Apr 21, 2017	8:00AM – 11:00AM	Core Planning Team	<ul style="list-style-type: none"> Review of draft strategic plan; thank CPT for their service
F	Apr 21, 2017	12:00PM – 3:30PM	Superintendent's Team	<ul style="list-style-type: none"> Review of draft strategic plan with Superintendent and key district leaders (Superintendent may include Board, business leaders, higher education, elected officials, as appropriate)
M	May 1, 2017	8:30AM – 3:30PM	Superintendent's Team	<ul style="list-style-type: none"> Formal review/vetting of Strategic Plan document
W	May 10, 2017	6:30PM-9:00PM	Board Approval	<ul style="list-style-type: none"> Formal Board presentation (prior to approval on May 24)

Strategic Plan Update

Upcoming Community Forums

Wednesday, March 29 5:30-7:30 PM

Northeast Middle School

Paseo Academy

Thursday, March 30 5:30-7:30 PM

Central Academy

Banneker Elementary

Questions



SY 16 Audit

Mr. Allan Tunis



KANSAS CITY PUBLIC SCHOOLS

Audit Presentation for June 30, 2016

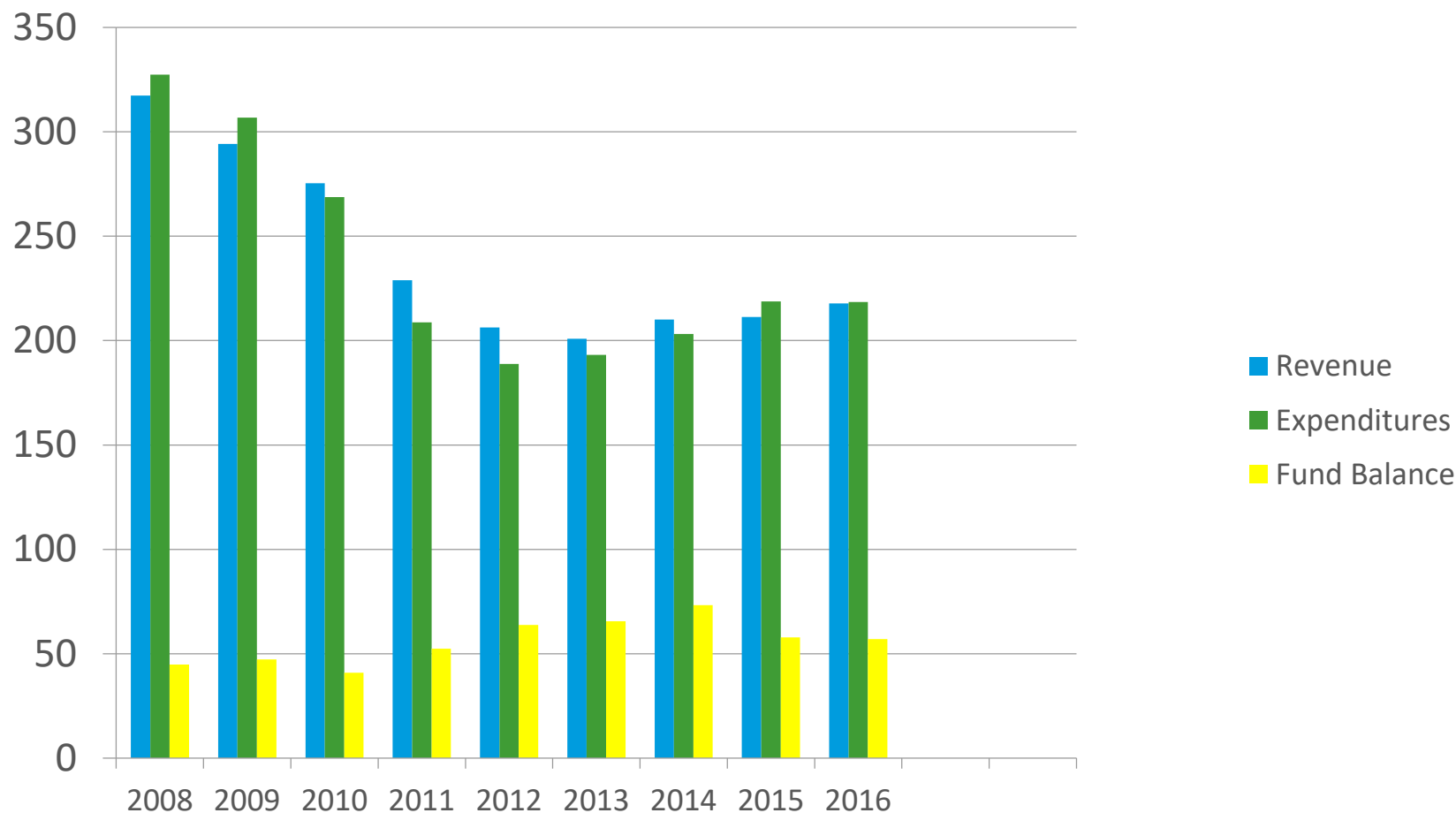


Data and information portrayed in the attached graphic presentations were derived from the District's financial statements and compliance report which were audited by RSM US LLP and Welch & Associates, LLC whose report thereon is dated December 6, 2016. The data presented should be read in conjunction with the District's financial statements and compliance report.

Financial Statement Summary

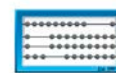
- Unmodified (“clean”) opinion on the financial statements
- Decrease in total governmental fund balances of \$11.6 million over prior year, due primarily to capital projects
- Overall decrease in fund balance and increase in expenditures due to the General Fund becoming the funding source for planned major renovations and repair projects undertaken by the facilities department during fiscal year 2016. Underspensing of operating funds during previous fiscal years has allowed the fund balance to be used to address infrastructure needs
- State Aid-Basic increased by \$.091 million or 0.745% from 2015
- Revenues from federal grant programs decreased by \$0.6 million from 2015
- Current S&P bond rating of A-/Positive on lease revenue debt

General Fund (including Teachers Fund) – Revenue, Expenditures & Fund Balance (in millions)



9-Year History of Major Programs and Compliance Opinions

Program	2008	2009	2010	2011	2012	2013	2014	2015	2016
Adult Ed	Unqualified	n/a	n/a	n/a	n/a	Unmodified	n/a	n/a	n/a
Child Nutrition	Qualified	Qualified	Qualified	Unqualified	Unqualified	n/a	n/a	Unmodified	n/a
Early Reading First	Unqualified	n/a	n/a	n/a	n/a	n/a	n/a	n/a	n/a
Head Start	Qualified	Unqualified	Unqualified	Unqualified	n/a	n/a	Unmodified	n/a	n/a
Title I	Qualified	Qualified	Qualified	Qualified	Unqualified	Unmodified	n/a	n/a	Unmodified
IDEA	n/a	Unqualified	Unqualified	Unqualified	n/a	n/a	Unmodified	n/a	n/a
Title II, Part A	n/a	Qualified	Qualified	Unqualified	n/a	Unmodified	n/a	n/a	n/a
Title II, Part B	n/a	n/a	n/a	n/a	n/a	Unmodified	n/a	n/a	n/a
Title III	n/a	Unqualified	n/a	n/a	n/a	n/a	n/a	n/a	n/a
State Fiscal Stabilization	n/a	n/a	Unqualified	Unqualified	Unqualified	n/a	n/a	n/a	n/a
Ed Jobs	n/a	n/a	n/a	Unqualified	n/a	n/a	n/a	n/a	n/a
School Imp. Grant	n/a	n/a	n/a	Unqualified	Unqualified	Unmodified	n/a	Unmodified	n/a
Teacher Incentive Grant	n/a	n/a	n/a	n/a	n/a	Unmodified	n/a	n/a	Unmodified
Child & Adult Food Care Program	n/a	n/a	n/a	n/a	n/a	n/a	n/a	n/a	Unmodified
Elementary & Secondary Counseling Program	n/a	n/a	n/a	n/a	n/a	n/a	n/a	n/a	Unmodified
State Compliance	Unqualified	Unqualified	Unqualified	Unqualified	Unqualified	Unmodified	Unmodified	Unmodified	Unmodified



Welch
& Associates
Certified Public Accountants



Compliance Audit – Number of Findings for the Past 9 Years

Type of Finding	2008	2009	2010	2011	2012	2013	2014	2015	2016
Material Weakness	3	-	1	1	-	-	-	-	-
Significant Deficiency	5	3	4	1	-	-	-	-	-
Material Instance of noncompliance	10	6	5	2	-	-	-	-	-
Instance of noncompliance	1	4	2	-	-	-	-	-	-
Total	19	13	12	4	0	0	0	0	0

Questions



RSIT Breakout Discussion



Feedback/Requests



Monthly Meeting Date

