

KANSAS CITY
PUBLIC SCHOOLS



Regional School Improvement Team

November 19, 2020



What methods are proving to be the most effective for interacting with students to provide instruction?

- Our Teachers provide whole-group instruction daily for 240 minutes.
- The most effective methods for student learning have been the small group instruction and the individual instruction provided by our teachers, paras, and interventionists



How are administrators monitoring the instructional process?

- Principals and Vice Principals are required to visit classrooms with 10 formal visits per month
- We have assigned additional administrators to monitor and support the teachers in the KCVA;
- Network Meetings take place monthly [Agenda](#)

Network Meeting



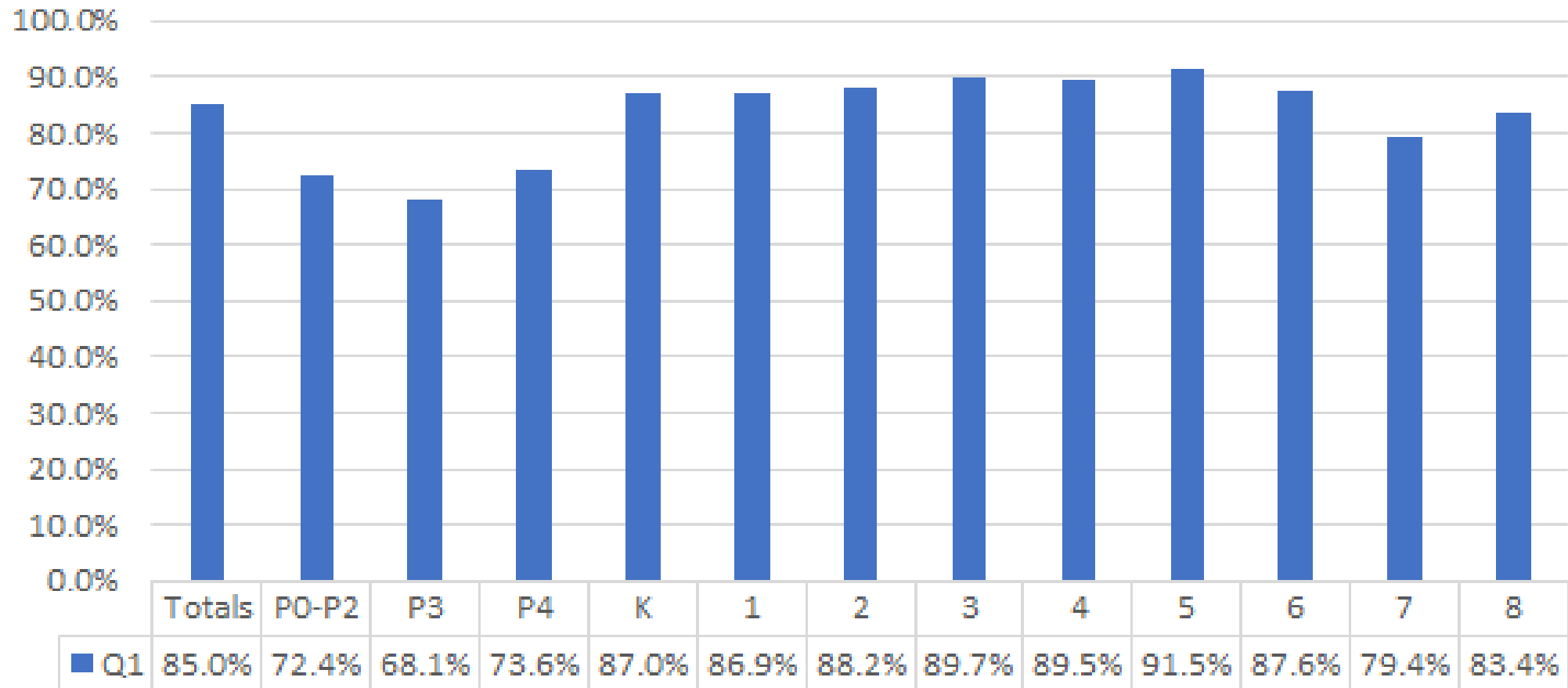
Contacting Students

Mr. David Rand



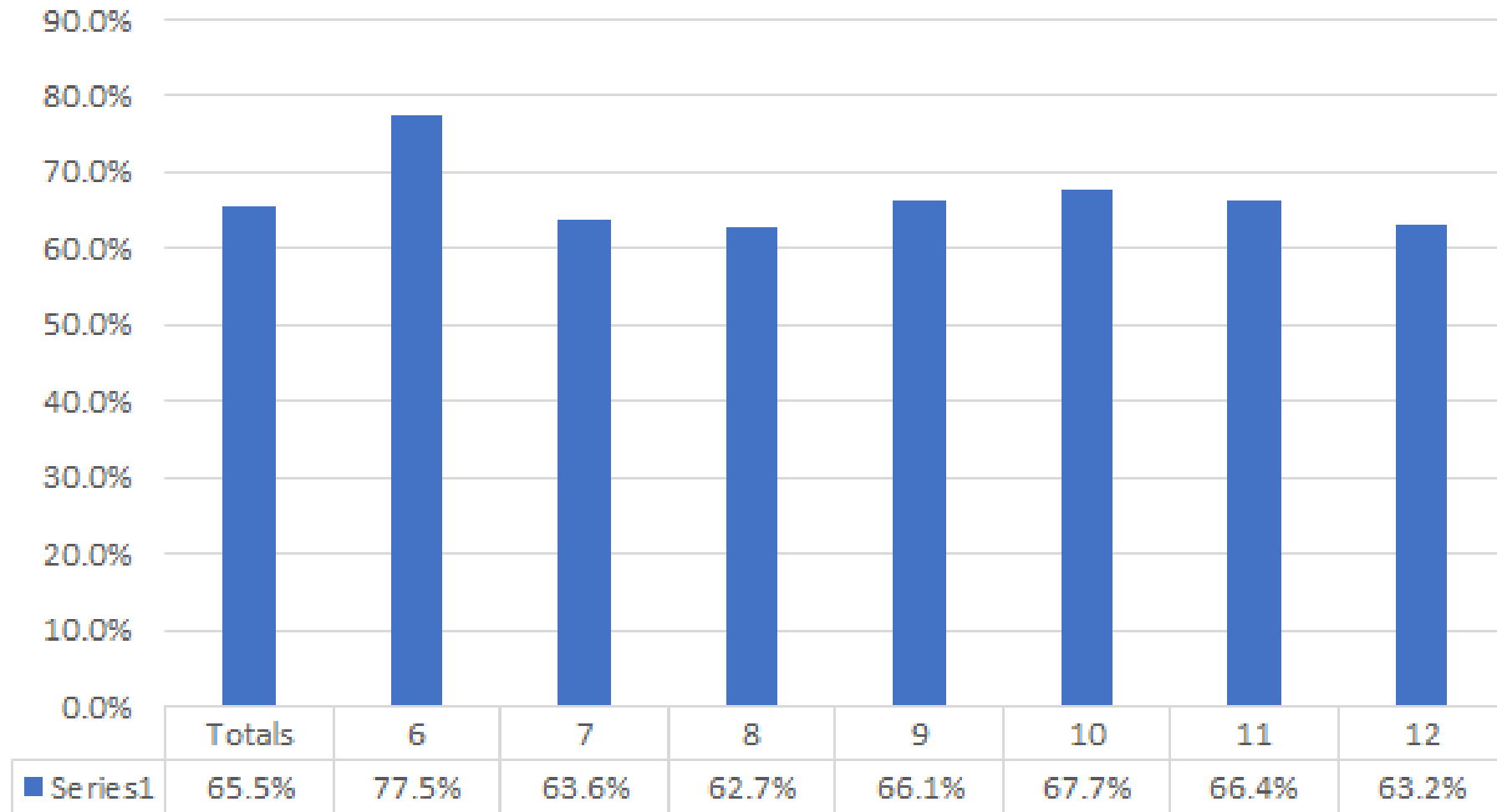
First Quarter Contact Rates

1st Quarter Contact Rates
ECH, Elementary and K-8 Totals



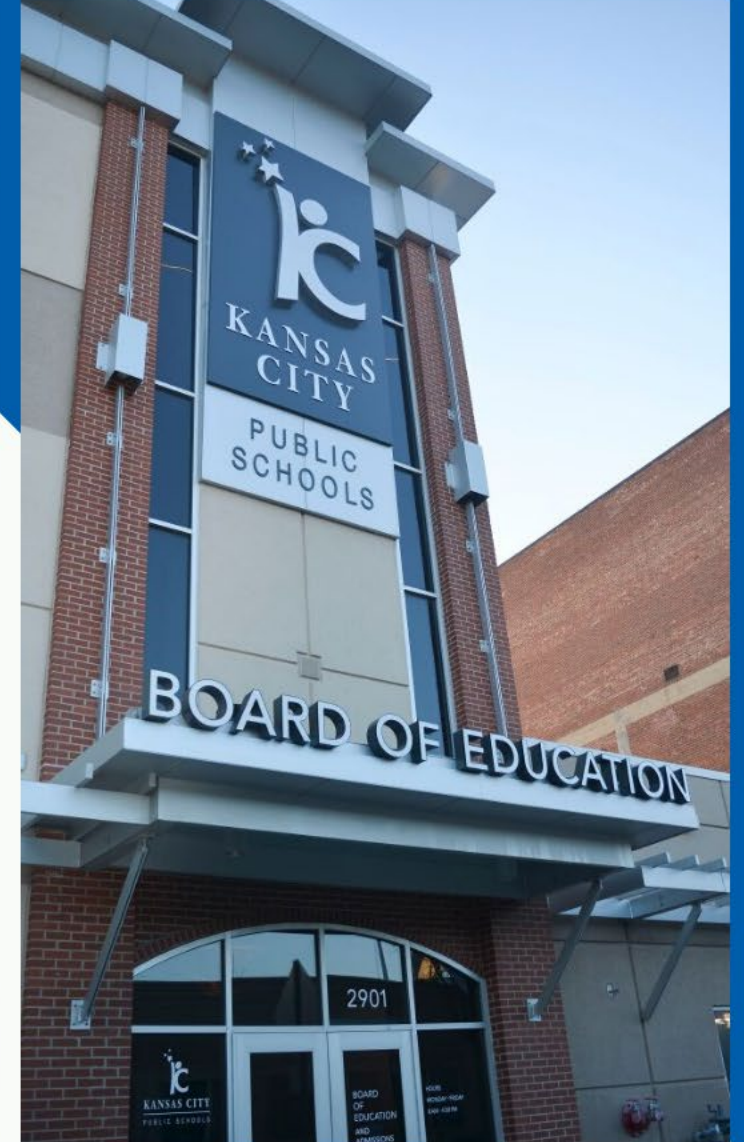
First Quarter Contact Rates

1st Quarter Contact Rates
Middle and High School Totals



iReady Data

Dr. Michelle Fitzgerald



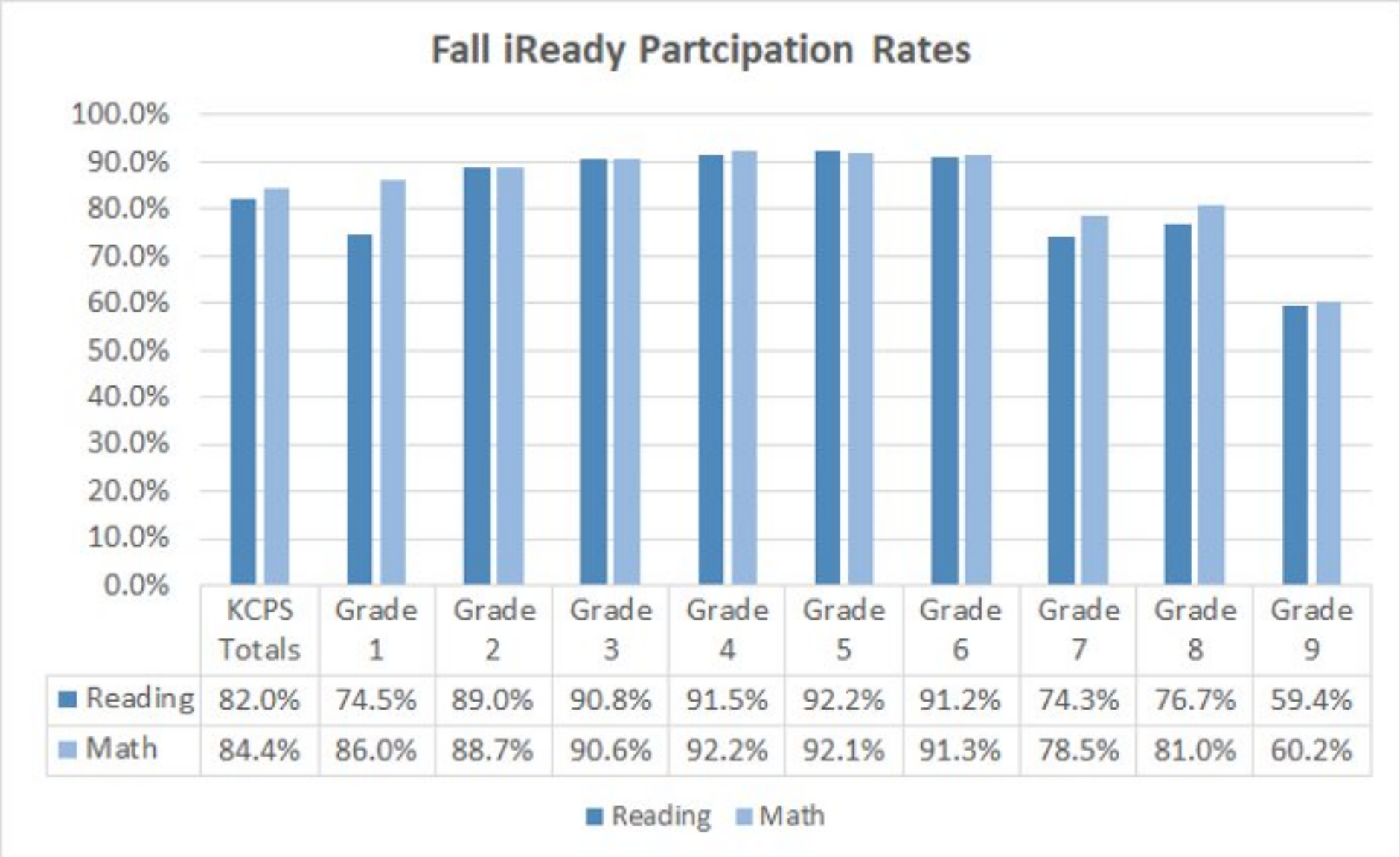
I-Ready Results

How are the results of the I-Ready assessment being used?

- CIPD, School Leadership, and Research & Accountability have discussed a plan to support schools through participation in deep data dives.
- Working to complete a cross-walk between I-Ready results and our first interim assessment in January with an instructional plan to move forward.
- Principals' meeting will address ensuring the required student minutes weekly are completed.

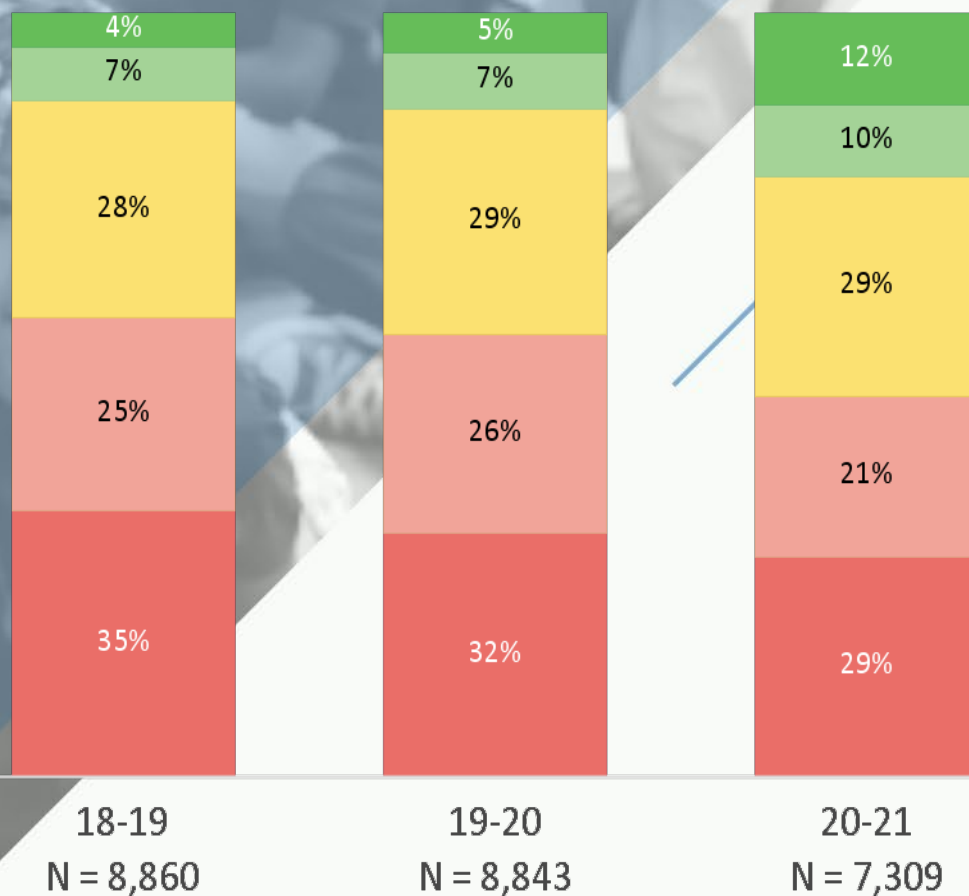


Fall i-Ready Participation



Fall i-Ready Results Reading (Grades 1-8)

Placement Distribution, Fall 18-19 to Fall 20-21



Mid On-Grade or Above

Students who have met the minimum requirements for the expectations of college- and career-ready standards in their grade level.

Early On-Grade

Students who have only partially met these grade-level expectations.

1 Grade Below

Students placed one year below grade level.

2 Grades Below

Students placed two years below grade level.

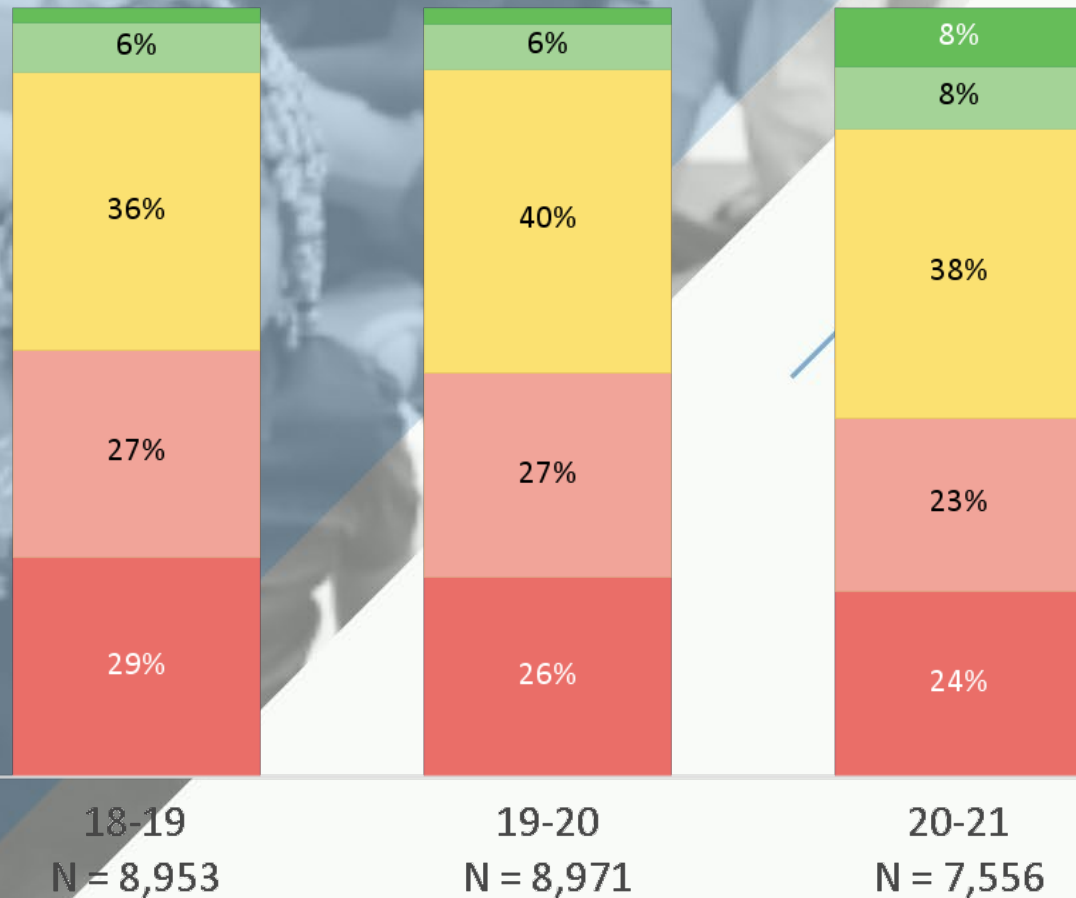
3+ Grades Below

Students placed three or more years below grade level.

i-Ready's placements are an indication of what students are expected to know at each grade level. The mid on-grade placement refers to students who may be considered proficient for their grade. In the fall, many students place below grade level.

Fall i-Ready Results Math (Grades 1-8)

Placement Distribution, Fall 18-19 to Fall 20-21



Mid On-Grade or Above

Students who have met the minimum requirements for the expectations of college- and career-ready standards in their grade level.

Early On-Grade

Students who have only partially met these grade-level expectations.

1 Grade Below

Students placed one year below grade level.

2 Grades Below

Students placed two years below grade level.

3+ Grades Below

Students placed three or more years below grade level.

i-Ready's placements are an indication of what students are expected to know at each grade level. The mid on-grade placement refers to students who may be considered proficient for their grade. In the fall, many students place below grade level.

Virtual Instruction and Course Completion

Dr. Marla Sheppard
Dr. Christy Harrison



Virtual Pattern of Instruction and Course Completion

KCPS currently offers distance learning and virtual learning

Remote Learning

- students have classes scheduled 5 days a week
- course completion is based on student grades for classroom assignments, projects and assessments

Virtual learning

- students access online curriculum at any time of the day
- teachers hold synchronous classes daily as well as small group and one-on-one instruction. They also hold office hours to support students as needed
- course are blended to support student learning and completion is tracked throughout
- students should be completing 5% of each course each week to be on track to complete the course

KCVA Engagement and Completion Tracking

Data Notebook ☆ 📄 ☁

File Edit View Insert Format Data Tools Add-ons Help [Last edit was 2 minutes ago](#)

100% \$ % .0 .00 123 Default (Ari... 10 B I S A 🔍 📊 📈 📉 📊 📈 📉

A	B	C	D	E	F	G	H	I
	Social Studies			15.20%	13.14%	13.87%	16.79%	94.15
	Language Arts			13.41%	29.05%	38.55%	43.58%	97.74
	Math			18.52%	32.72%	48.15%	54.32%	93.46
	Science			12.00%	30.40%	42.40%	48.80%	83.15
	Social Studies			20.44%	30.66%	44.53%	53.28%	28.77
	Language Arts			13.97%	22.91%	30.17%	35.20%	94.69
	Math			12.35%	24.69%	37.04%	41.98%	110.06
	Science			14%	22.40%	29.60%	33.60%	90.29
	Social Studies			5.84%	12.41%	13.87%	16.06%	88.25
	Language Arts			17.32%	25.70%	35.20%	41.90%	80.46
	Math			5.56%	22.22%	29.63%	37.04%	83.92
	Science			4.00%	25%	28.00%	36%	100
	Social Studies			0.73%	8.03%	17.52%	21.90%	100
	Language Arts			5.59%	22.91%	29.05%	34.08%	95.38
	Math			6.79%	22.84%	26.54%	35.19%	92.92
	Science			6%	24.00%	27.20%	35.20%	100

CVA Contact Log - Q2 ☆ 📄 ☁

View Insert Format Data Tools Add-ons Help [Last edit was seconds ago](#)

100% \$ % .0 .00 123 Default (Ari... 10 B I S A 🔍 📊 📈 📉 📊 📈 📉

	B	C	D	E	F	G	H	I
	11/9 - 11/13		11/16 - 11/20		11/23 - 11/27-Thanksgiving		11/30 - 12/4	
	Contact 1	Contact 2	Contact 1	Contact 2	Contact 1	Contact 2	Contact 1	Contact 2
	Small Group	Class Meetin	Intervention					
	Intervention	Class Meetin	Intervention					
	Class Meetin	Small Group						
	Intervention	Intervention	Intervention					
	Class Meetin	Small Group	Class Meetin					
	Class Meetin	Small Group	Class Meetin					
	Small Group	Small Group	Class Meetin					
	Small Group	Small Group	Small Group					
	Small Group	Small Group	Small Group					
	Small Group	Class Meetin	Small Group					
	Small Group	Class Meetin	Small Group					
	Class Meetin	Edgenuity	Intervention					
	Class Meetin	Small Group						
	Class Meetin	Class Meetin	Class Meetin					
	Intervention	Class Meetin	Small Group					
	Small Group	Intervention	Small Group					

KCVA Student Progress Data

Elementary Courses

Course	Average Score	Course Completion Average
ELA	81.3%	44%
Math	80.4%	48%
Science	78.2%	45%
S.S.	83.1%	41%

Secondary Courses

Average Score	Course Completion Average
74.11%	36%

Support and Structures:

- Data Notebooks
- PD Series: Data Driven Instruction
- Monthly Data Consults with Teachers
- Bi-Weekly PLC Meetings
- Monthly Principal Data Review

Kansas City Public Schools

Learning Centers

Dr. Darrin Slade



Next Steps: A Look at Learning Centers

*Learning Centers are being established to provide additional support to a limited number of KCPS students who need a more structured environment to engage with distance learning

- General Information

- Three Learning Center Hubs
- 2 elementary hubs
- 1 secondary hub
- No more than 12 students in each classroom (120 student capacity)
- Paraprofessionals, City Year and LINC staff members will provide student support
- Transportation provided
- Lunch and breakfast provided
- Distance learning will be primary form of instruction
- Opportunities for direct instruction will be provided
- Participating students will take pre and posttest related to basic foundational reading / math skills

A background image showing a group of diverse students in a classroom setting, some looking at a screen and others interacting. The image is partially covered by a blue diagonal overlay.

Criteria for Student Selection

Schools will identify 3% of their student population to participate in the learning centers

To participate students must be one of the following:

- 2 or more grade levels below in reading / math based on 2020/2021 I-Ready or other school-based data
- Currently in danger of failing core classes as a result of poor attendance and will benefit from a more structured / supervised environment
- Log in participation rate is less than 50%

Proposed Learning Center Hubs

Gladstone Hub – Whittier, Garfield, James, Trailwoods, Rogers, Phillips, Pitcher, Wheatley, Gladstone, Longfellow, Garcia

King Hub – Faxon, Melcher, Carver, FLA, Hartman, Banneker, Hale Cook, AC Prep, Troost, Border Star, Knotts

Paseo Hub – All middle / high schools

Hub locations selected based on the following:

- 50% of KCPS students live in the Northeast area

- King and Paseo provide a centralized location and a site that best maximizes school resources related to transportation and food service

Remediation Plan

Dr. Marla Sheppard



Catching Kids Up: Plan for Remediation

School-Level Plans

- Data dives for creation of individual student plans; [Data Deep Dive](#)
- Interventionists working with students
- Use of Compacted curriculum with priority standards
- Continued conversations about grading in a virtual environment
- Instructional framework; [Instructional Design Protocol](#)

District-Level Plans

- Discussion about an alternate calendar for 2021-22 school year
- Further focus on the curriculum and the compacting of the curriculum
- Implementation of Illuminate for teachers to get quick data for instructional response
- Discussion regarding Wednesday Professional Development and student tutorials

Questions



RSIT Breakout Discussion



Feedback/Requests



Regional School Improvement Team



Thank you

Our next RSIT is February 25, 2021