

Kansas City Public Schools and Department of Elementary and Secondary Education

Regional School Improvement Team Meeting

Tuesday, August 28 2012

KANSAS CITY
PUBLIC SCHOOLS



Superintendent Goals

Goal 1: Student Achievement

Timeline

- August 2012 – June 2013

Student Achievement: Minimum of 1.5 – 2.0 years of student growth per year per grade level.

Benchmarks

- Monthly Assessments

Teacher made formative assessments will be given monthly and reports will be submitted by building, by subject, and by cohort.

- Quarterly Assessments

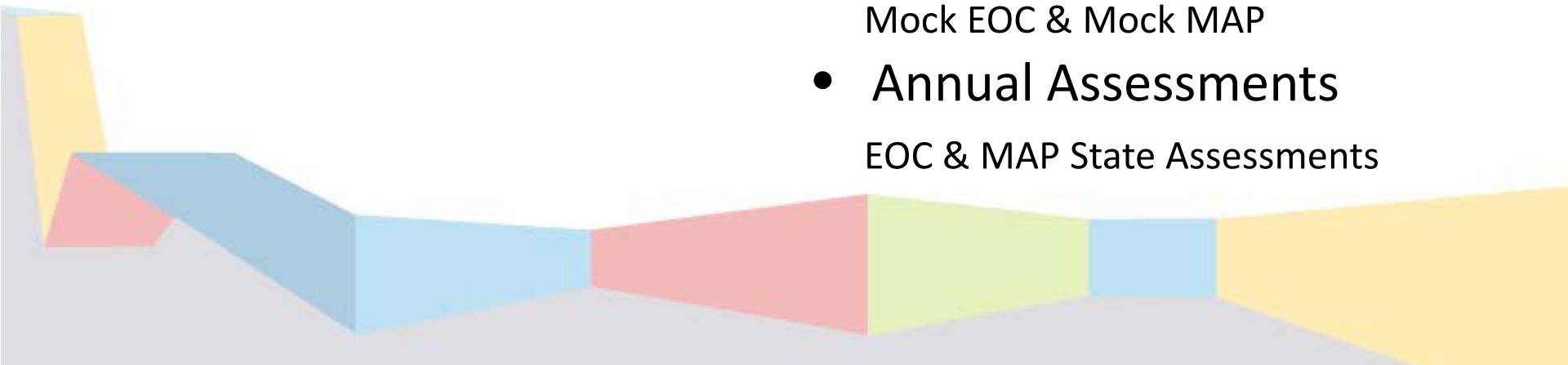
Acuity – DRA2 – Data Cycle

- Semester Assessments

Mock EOC & Mock MAP

- Annual Assessments

EOC & MAP State Assessments



Superintendent Goals

Goal 2: College and Career Readiness

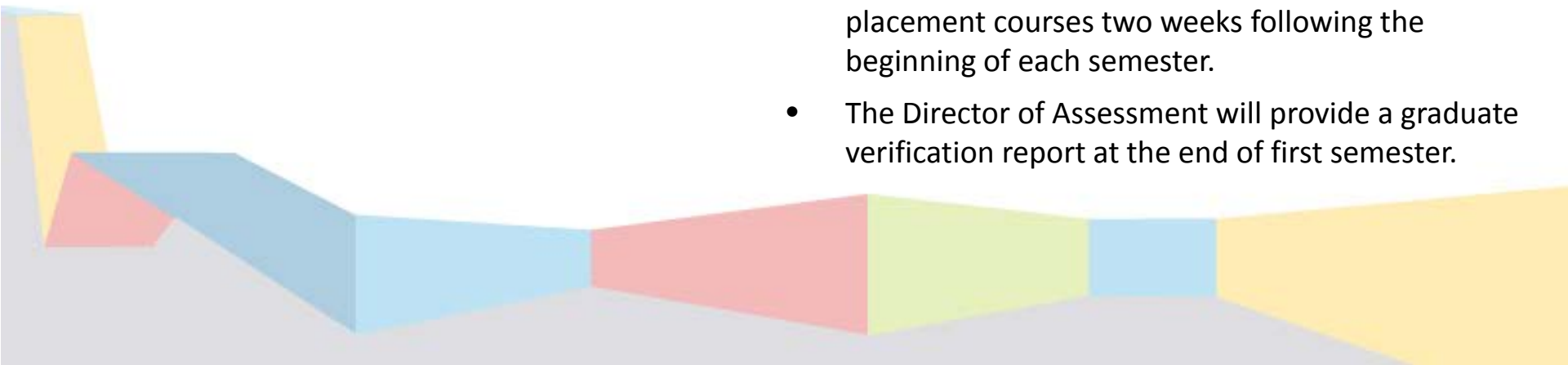
Timeline

- August 2012 – June 2013

District will meet at least four of the seven College and Career Readiness performance standards.

Benchmarks

- Director of Assessment will provide monthly reports following receipt from ACT Testing Center of Students tested and their scores.
- Director of Counselors will provide a quarterly report that tracks all seniors' college readiness participation.
- CTE Director will provide monthly update on CTE enrollment.
- Director of Assessment will provide a report on the number of students enrolled in advanced placement courses two weeks following the beginning of each semester.
- The Director of Assessment will provide a graduate verification report at the end of first semester.



Superintendent Goals

Goal 3: Classroom Management and Student Behavior

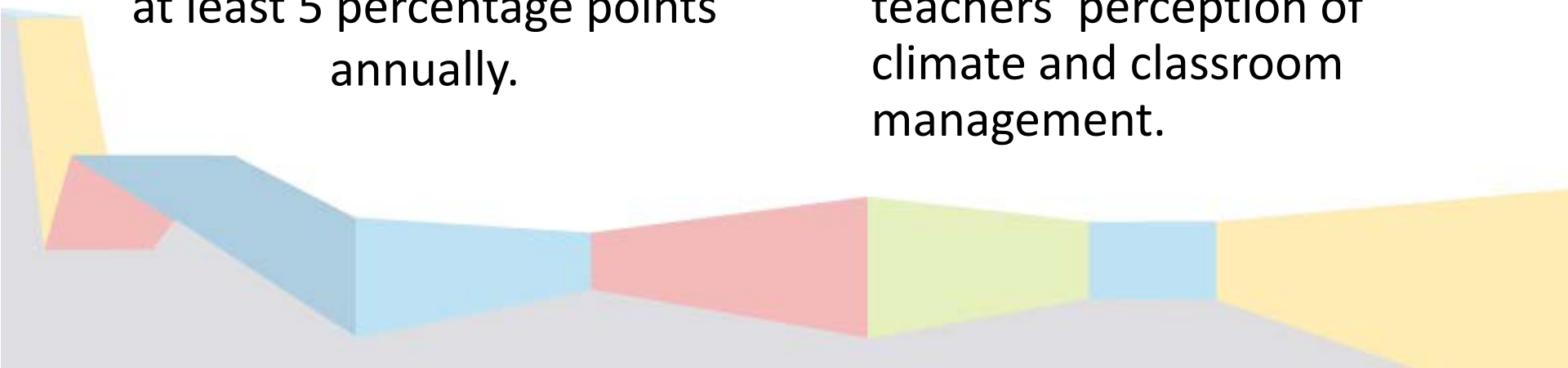
Timeline

- August 2012 – June 2013

Percentage of KCPS teachers reporting a need for PD in the area of classroom management will decrease by at least 5 percentage points annually.

Benchmarks

- Director of Assessment will provide monthly suspension data reports to the superintendent by building and by grade level.
- In March, a district survey will be conducted assessing teachers' perception of climate and classroom management.



Superintendent Goals

Goal 4: Student Attendance and Dropout Prevention

Timeline

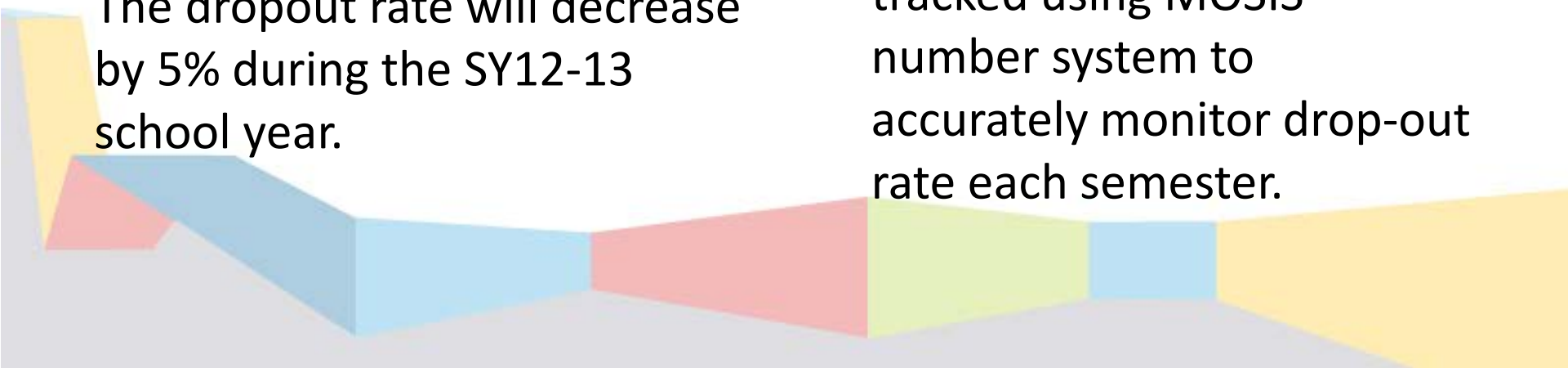
- August 2012 – June 2013

Student attendance will increase at the elementary level to 95% and 90% at the secondary level.

The dropout rate will decrease by 5% during the SY12-13 school year.

Benchmarks

- Monthly student attendance reports will be provided for elementary schools and for secondary schools.
- Student mobility will be tracked using MOSIS number system to accurately monitor drop-out rate each semester.



Superintendent Goals

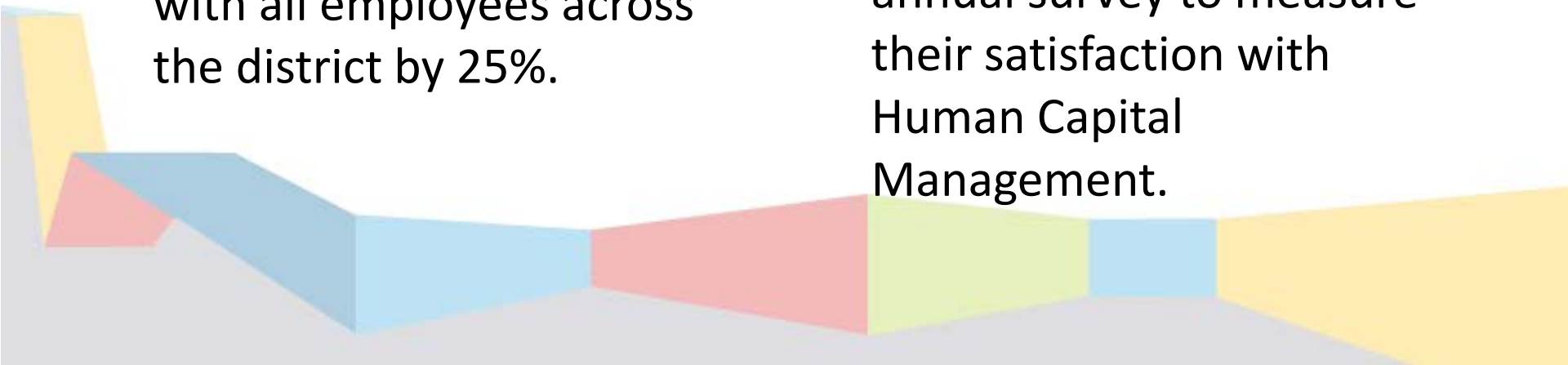
Goal 5: Human Capital Management

Timeline

- July 2012 – June 2013
- Increase customers service at the school level with principal by 40%.
- Increase customer service with all employees across the district by 25%.

Benchmarks

- Principals will complete semi-annual surveys to measure their satisfaction with Human Capital Management.
- All employees will complete annual survey to measure their satisfaction with Human Capital Management.



MSIP 4 - APR History

4th CYCLE DISTRICT SUMMARY OF ANNUAL PERFORMANCE REPORT (APR)

District Name: Kansas City 33

County District Code: 048078

MSIP Standard/Indicator	2006 Met/Not Met	2007 Met/Not Met	2008 Met/Not Met	2009 Met/Not Met	2010 Met/Not Met	2011 Met/Not Met
9.1*1 MAP Grades 3-5 Math	Met	Not Met	Not Met	Not Met	Not Met	Not Met
9.1*2 MAP Grades 3-5 CA	Not Met	Not Met	Not Met	Not Met	Not Met	Not Met
9.1*3 MAP Grades 6-8 Mathematics	Not Met	Not Met	Not Met	Not Met	Not Met	Not Met
9.1*4 MAP Grades 6-8 CA	Not Met	Not Met	Not Met	Not Met	Not Met	Not Met
9.1*5 MAP Grades 9-11 Mathematics	Not Met	Not Met	Not Met	Not Met	Not Met	Not Met
9.1*6 MAP Grades 9-11 CA	Not Met	Not Met	Not Met	Not Met	Not Met	Not Met
Bonus MAP Achievement	N/A	Met	Met	Met	Met	Not Met
Subject Area/EOC Bonus	Not Met	Not Met	Not Met	Not Met	Not Met	Not Met
9.3 ACT	Not Met	Not Met	Not Met	Not Met	Not Met	Not Met
9.4*1 Advanced Courses	Met	Met	Met	Met	Met	Met
9.4*2 Career Education Courses	Met	Met	Met	Met	Met	Met
9.4*3 College Placement	Not Met	Not Met	Not Met	Not Met	Not Met	Not Met
9.4*4 Career Education Placement	Not Met	Met	Met	Met	Met	Met
9.5 Graduation Rate	Not Met	Met	Not Met	Not Met	Not Met	Not Met
9.6 Attendance Rate	Not Met	Not Met	Not Met	Not Met	Not Met	Not Met
9.7 Subgroup Achievement	Not Met	Not Met	Not Met	Not Met	Not Met	Not Met
Total Standards Met	3	5	4	4	4	3

August 2012 APR Update

- The Preliminary APR released on August 1st shows that KCPS MET 5 Performance Standards:
 - 9.4*1 – Advanced Courses
 - 9.4*2 – Career Tech Ed Courses
 - 9.4*3 – College Placement
 - 9.4*4 – Career Tech Ed Placement
 - Bonus MAP Achievement



2011 vs. 2012 MSIP Standards/Indicators

<i>MSIP Standard/Indicator</i>	<i>2011</i>	<i>2012</i>	<i>Improved</i>	Earned a 'MET' on 2012 APR
<i>9.1*1 - 3-5 Mathematics</i>	716.1	723.5	Y	N
<i>9.1*2 - 3-5 Communication Arts</i>	709.2	708.0	N	N
<i>9.1*3 - 6-8 Mathematics</i>	700.9	709.1	Y	N
<i>9.1*4 - 6-8 Communication Arts</i>	714.7	714.9	Y	N
<i>9.1*5 - 9-11 Mathematics</i>	706.8	710.3	Y	N
<i>9.1*6 - 9-11 Communication Arts</i>	763.1	740.0	N	N
<i>9.3 - ACT</i>	17.3%	15.0%	N	N
<i>9.4*1 - Advanced Courses</i>	35.5%	47.2%	Y	Y
<i>9.4*2 - CTE Courses</i>	10.0%	17.2%	Y	Y
<i>9.4*3 - College Placement</i>	52.2%	66.3%	Y	Y
<i>9.4*4 - CTE Placement</i>	91.8%	88.7%	N	Y
<i>9.5 - Graduation Rate</i>	57.3%	64.3%	Y	N
<i>9.6 - Attendance</i>	89.1%	91.3%	Y	N
<i>BONUS - MAP Achievement</i>	0	4	Y	Y

August 2012 Update

Standard	2012 Target	Best Case Projection	Goal	February 2012 Projected		August 1st APR	
9.1*1 - 3-5 Mathematics	MAP Index of 735.8	Met	735.8	716.2	Not Met	723.5	Not Met
9.1*2 - 3-5 Communication Arts	MAP Index of 777.8	Not Met	777.8	717.9	Not Met	708.0	Not Met
9.1*3 - 6-8 Mathematics	MAP Index of 745.5	Not Met	745.5	717.3	Not Met	709.1	Not Met
9.1*4 - 6-8 Communication Arts	MAP Index of 735.6	Met	735.6	704.7	Not Met	714.9	Not Met
9.1*5 - 9-11 Mathematics	MAP Index of 726.3 and Gap Bonus Met	Met	726.3	710.6	Not Met	710.3	Not Met
9.1*6 - 9-11 Communication Arts	MAP Index of 766.1 and Gap Bonus Met	Met	766.1	738.1	Not Met	740.0	Not Met
9.3 - ACT	41.8% of Graduates at/above Nat'l Average	Not Met	41.8%	12.9%	Not Met	15.0%	Not Met
9.4*1 - Advanced Courses	37% of Credits at 11/12 in Advanced Courses	Met	37.0%	53.9%	Met	47.2%	Met
9.4*2 - CTE Courses	11% of Credits at 11/12 in CTE Courses	Met	11.0%	15.4%	Met	17.2%	Met
9.4*3 - College Placement	56.3% of 2011 Graduates Successfully Placed	Met	56.3%	57.0%	Met	66.3%	Met
9.4*4 - CTE Placement	92.9% of CTE Completers Successfully Placed	Met	92.9%	93.0%	Met	88.7%	Met
9.5 - Graduation Rate	100% of Cohort Dropouts Recovered	Not Met	85.0%	62.9%	Not Met	64.3%	Not Met
9.6 - Attendance	95% Attendance Goal Across all Levels	Not Met	95.0%	91.7%	Not Met	91.3%	Not Met
9.7 - Subgroup Achievement	8/16 Subgroups Met on 2012 AYP	Not Met	8	3	Not Met	N/A	Not Met
BONUS - MAP Achievement	4/6 Areas of MAP Index Gains in 2012	Met	4	6	Met	4	Met
Total Standards Met 2012		9		5		5	
Projected 2012 Accreditation Status		Full Accreditation		Unaccredited		Unaccredited	

MAP/EOC Results 2012

Communication Arts

- *Increase at the 7th and 8th Grade Levels.*

MAP Mathematics

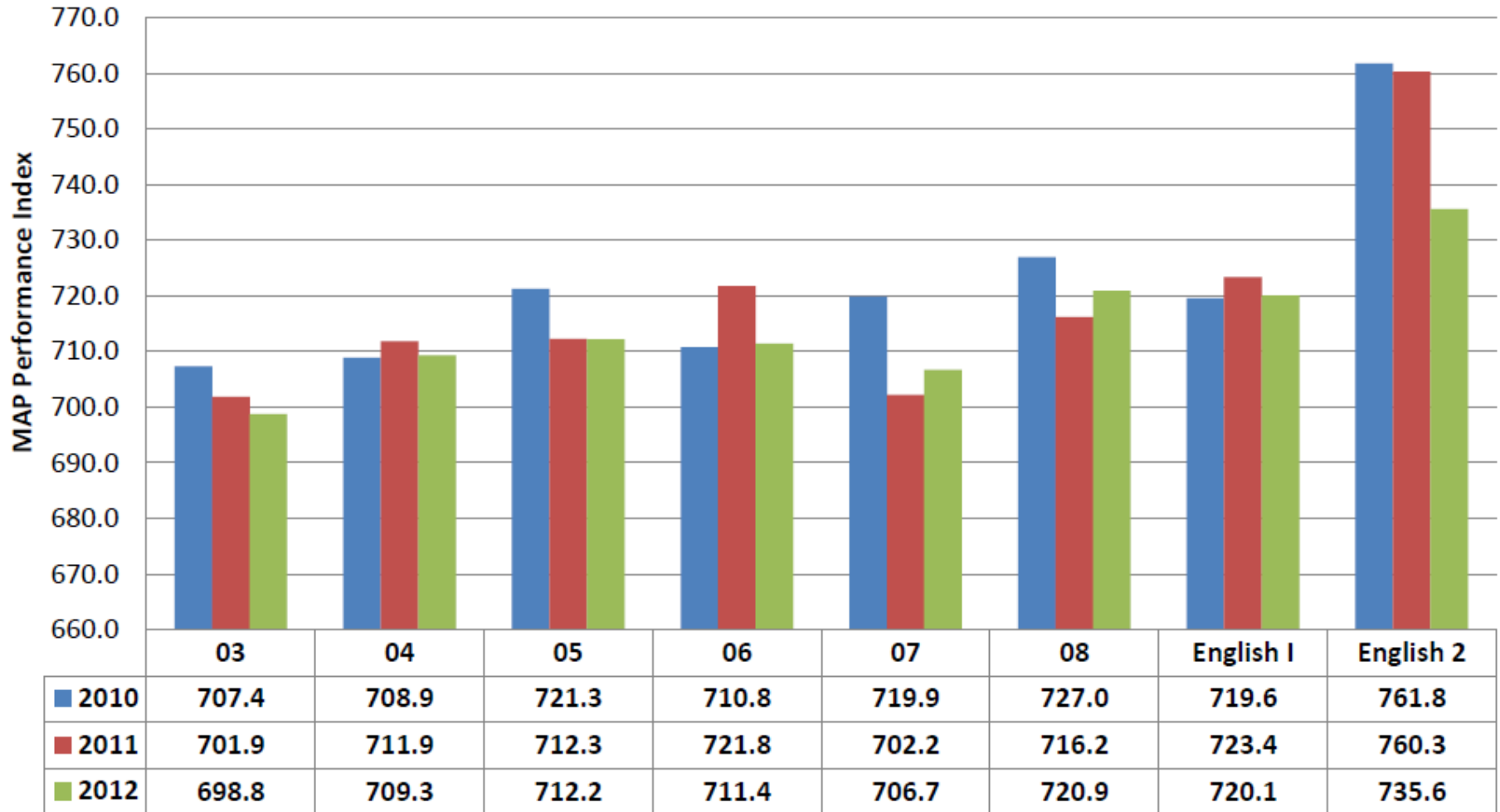
- *Increased at every grade level.*

END of Course Exams

- *Increase in Algebra I and Geometry.*



KCPS Communication Arts MAP/EOC SY 2010-2012 by Grade

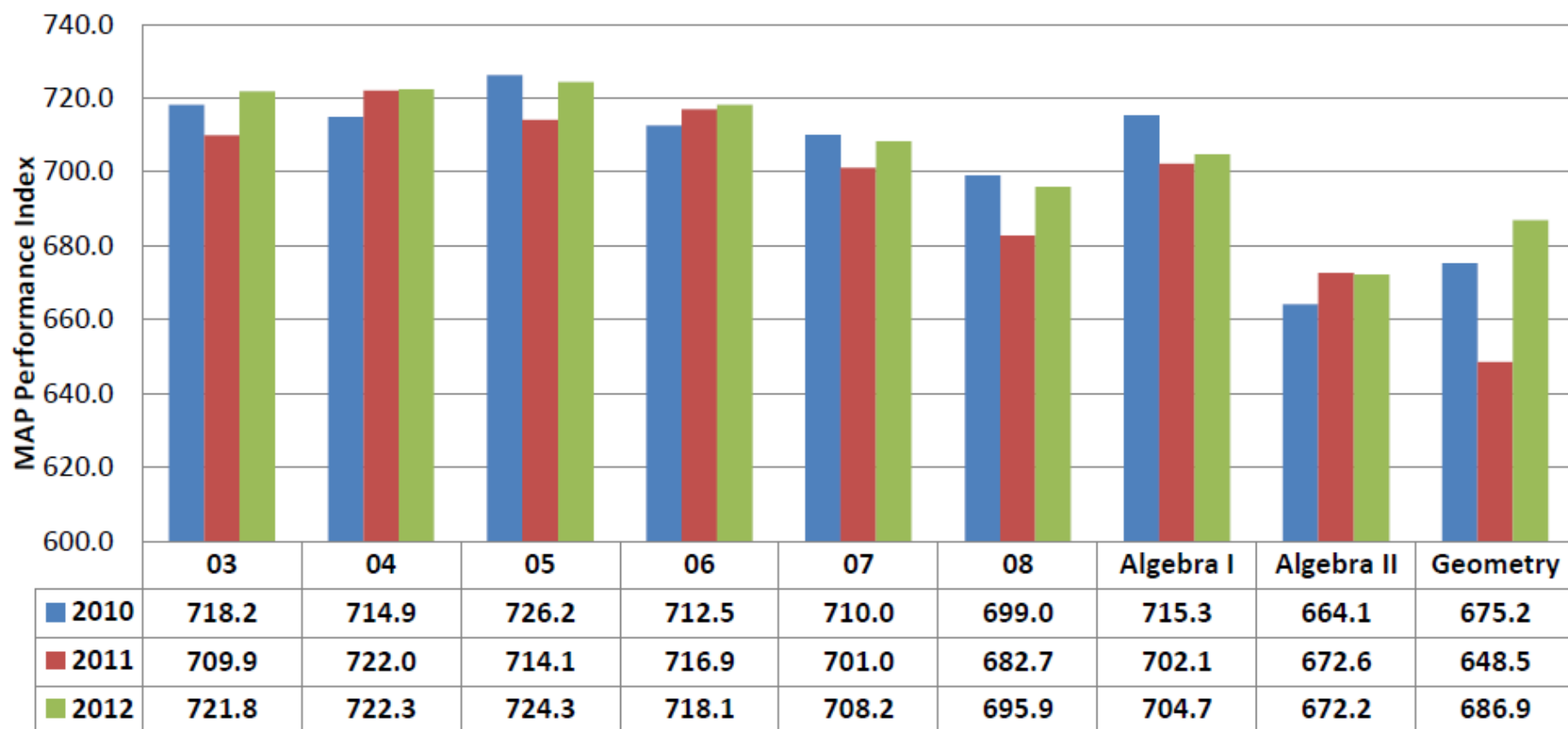


Plan for increasing Communication Arts MAP/EOC scores

- Aligned Curriculum
- Implementation of the curriculum
- Accurate use of reading resources
- Increased instructional time that targets the diagnosed deficiencies of students
- Professional development and courses offered to teachers on effective reading strategies
- Use of data cycle to monitor the progress of students of specific learning targets
- Train coaches on the use of data to inform instruction
- Reading Interventionists



KCPS Mathematics MAP/EOC SY 2010-2012 by Grade



MAP/EOC Results 2012

Science

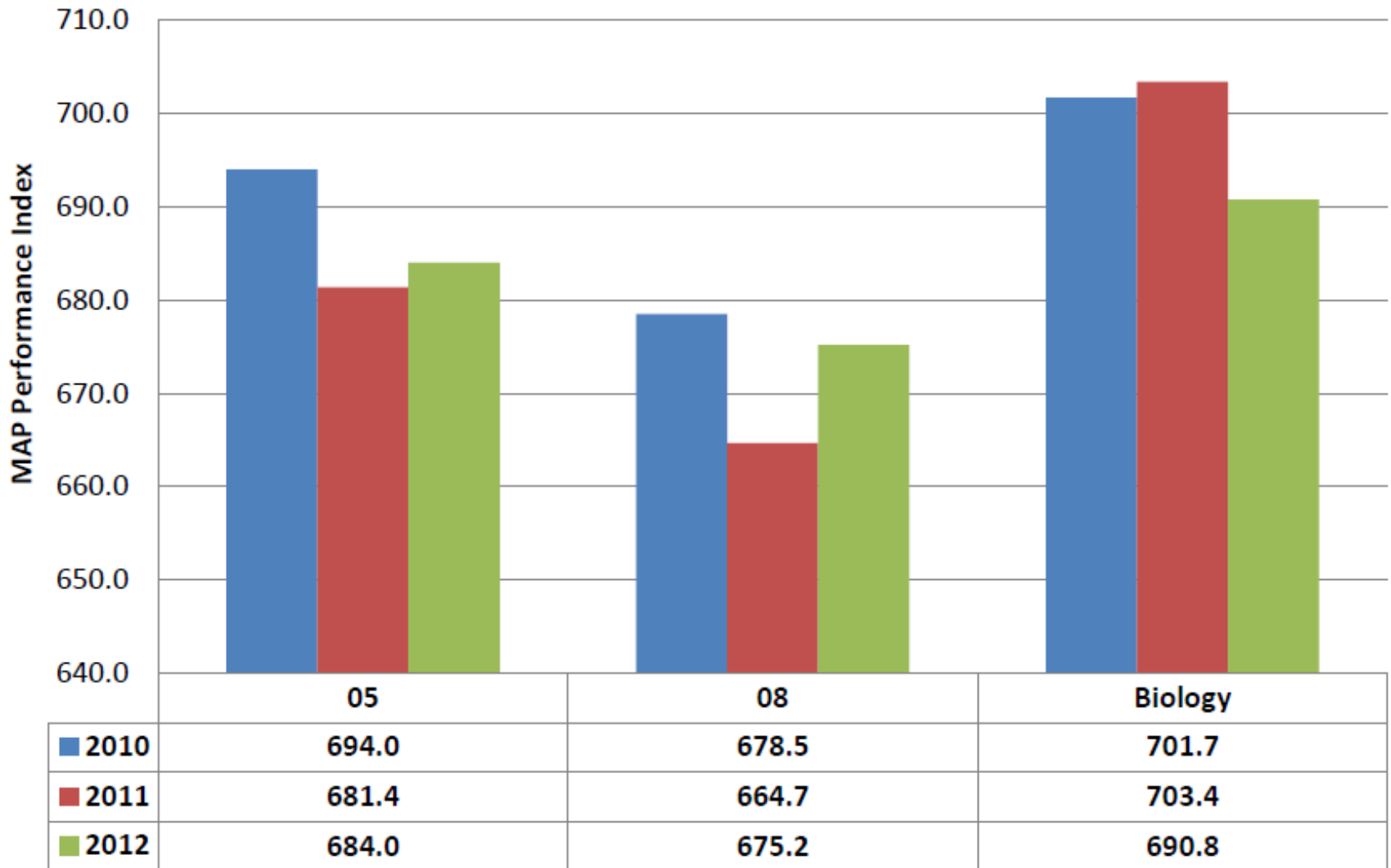
- *Increase at 5th Grade and 8th Grade Levels*

Social Studies EOC

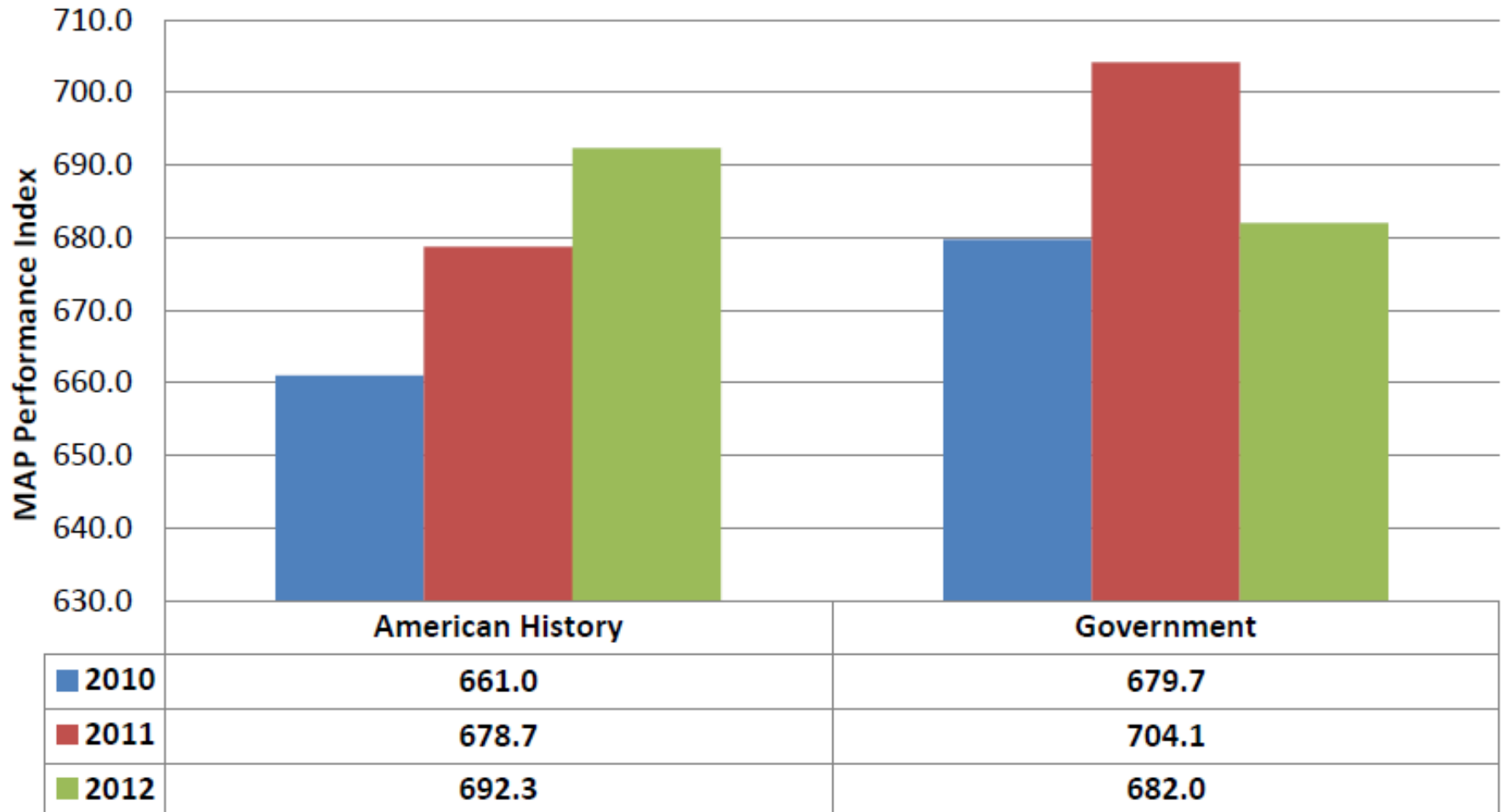
- *Increase in American History*



KCPS Science MAP/EOC SY 2010-2012 by Grade

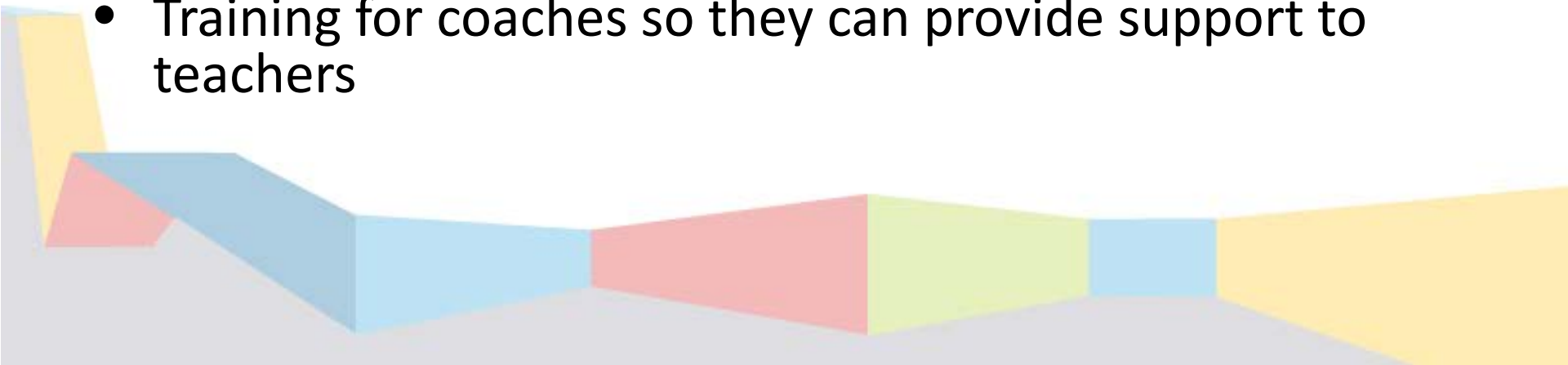


KCPS Social Studies End-Of-Course SY 2010-2012 by Grade



Plan for increasing MAP/EOC scores

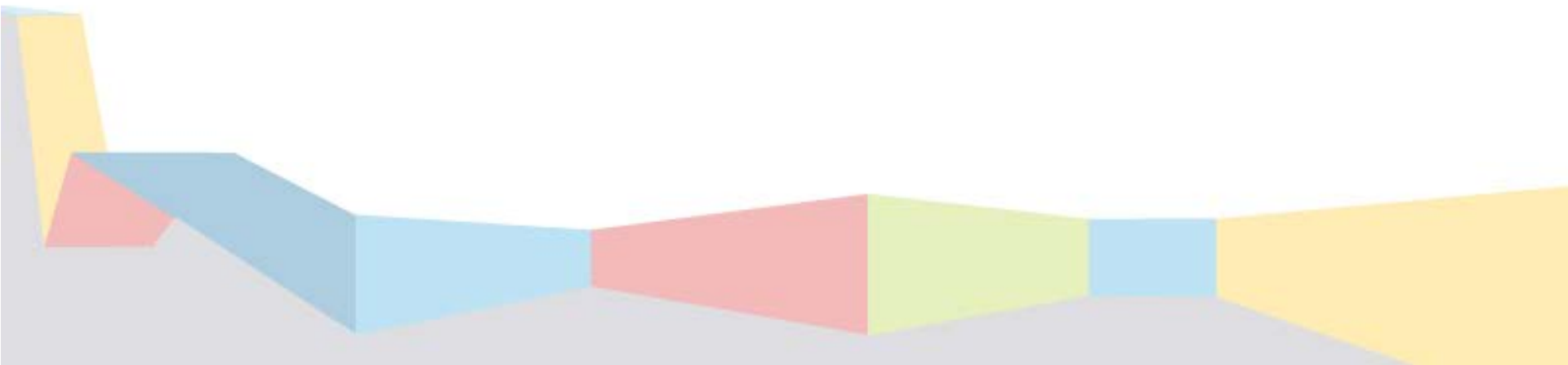
- Aligned Curriculum
- Implementation of the curriculum
- Professional development specifically for Government and Biology teachers
- Use of unit assessments to monitor the progress of students of specific learning targets
- Use of interventions with students that aren't successful
- Training for coaches so they can provide support to teachers



Essential Belief

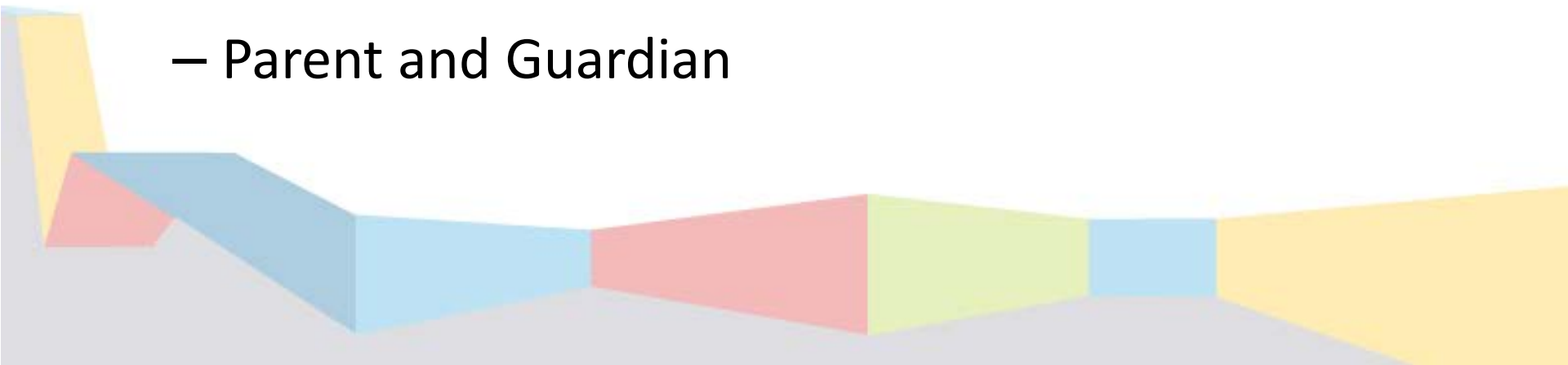
What makes education effective is well-leveraged leadership that ensures great teaching to guarantee great learning.

Paul Bambrick-Santoyo (2012)



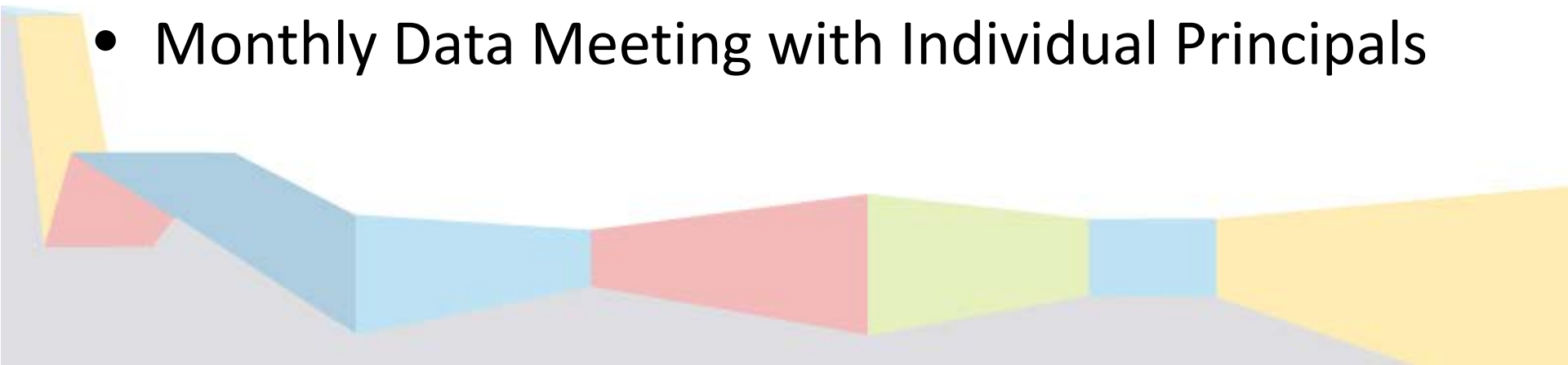
Monitoring Non-Negotiable Goals for Improving Student Achievement

- Leverage Leadership from:
 - District
 - Building
 - Teacher
 - Individual Student
 - Parent and Guardian



District Leadership

- Initial Data Review Meetings with Principals
- Individual Goal-Setting Meetings with Each Principal
 - Review of the Assessment Calendar
 - Standardize the Lesson Plan Design
 - Set Expectations for Principal to be in Each Classroom Bimonthly
 - Expect
- Monthly Data Meeting with Individual Principals

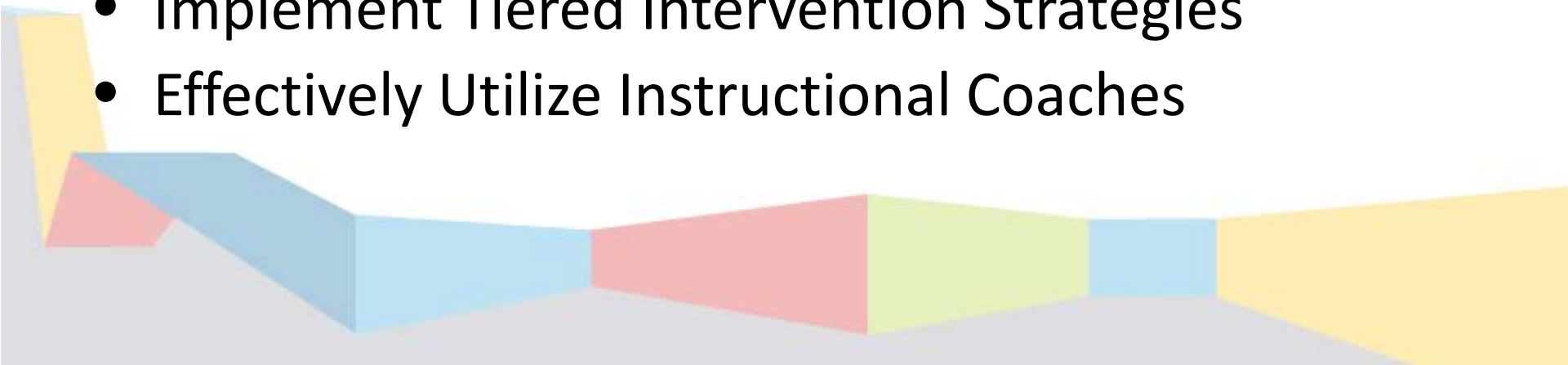


Effective Leaders succeed because of how they
use their time -- what they do,
and when they do it.



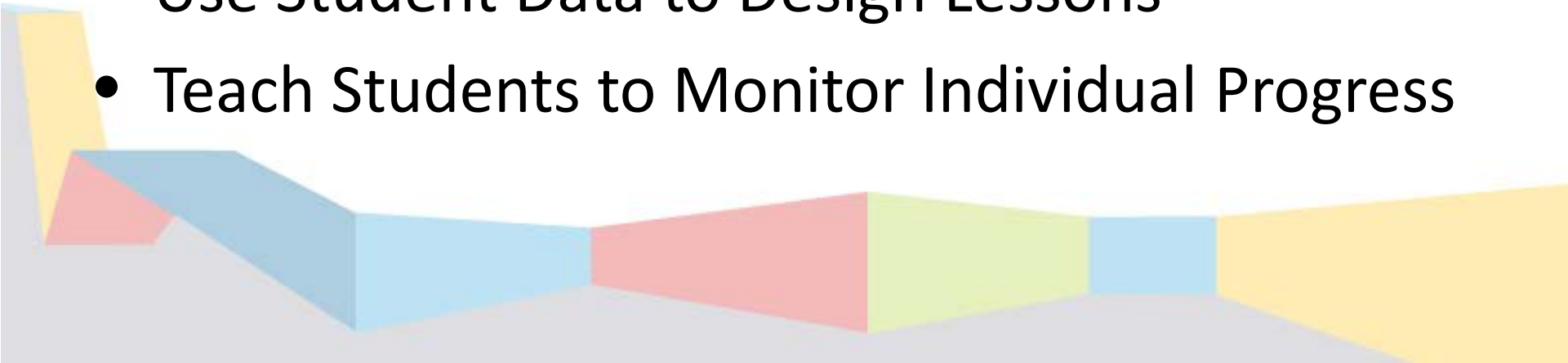
Principal Leadership

- Effective Leaders succeed because of how they use their time, what they do, and when they do it.
- Twice Monthly in every classroom
- Effective Direct feedback to each teacher twice monthly
- Refine teacher meetings to focus on data-analysis & student achievement
- Implement Tiered Intervention Strategies
- Effectively Utilize Instructional Coaches



Teacher Expectations

- Participate in District Professional Development
- Prepare Engaging & Rigorous Curriculum-Based Lessons
- Provide Assessment “for” Learning
- Provide Assessment “of” Learning
- Use Student Data to Design Lessons
- Teach Students to Monitor Individual Progress



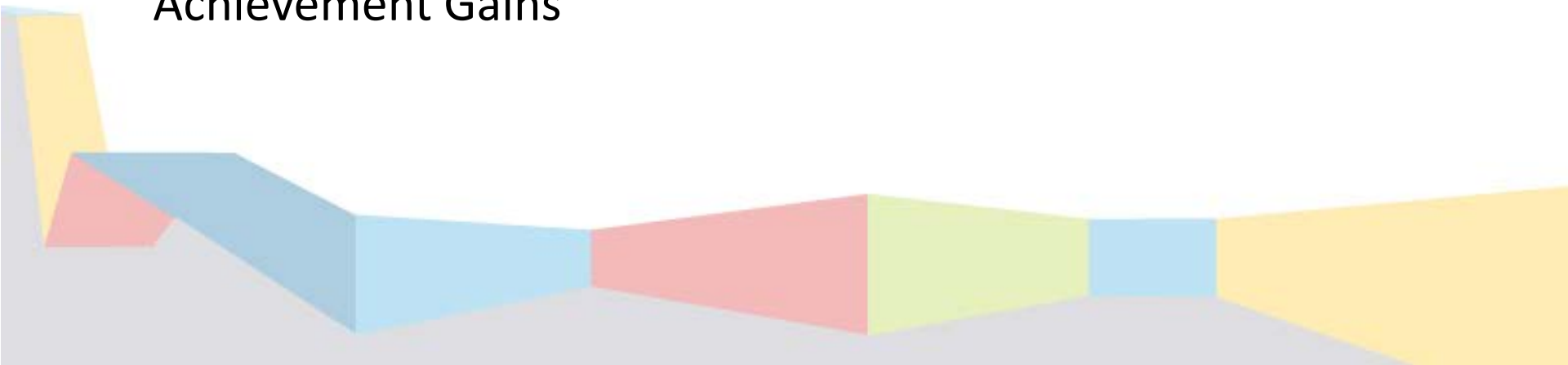
Student & Parent/Guardian Expectations

Student

- Establish Personal Learning Goals Based on Test Performance
- Monitor & Record Gains in Personal Learning Growth
- Receive Recognition for Achievement Gains

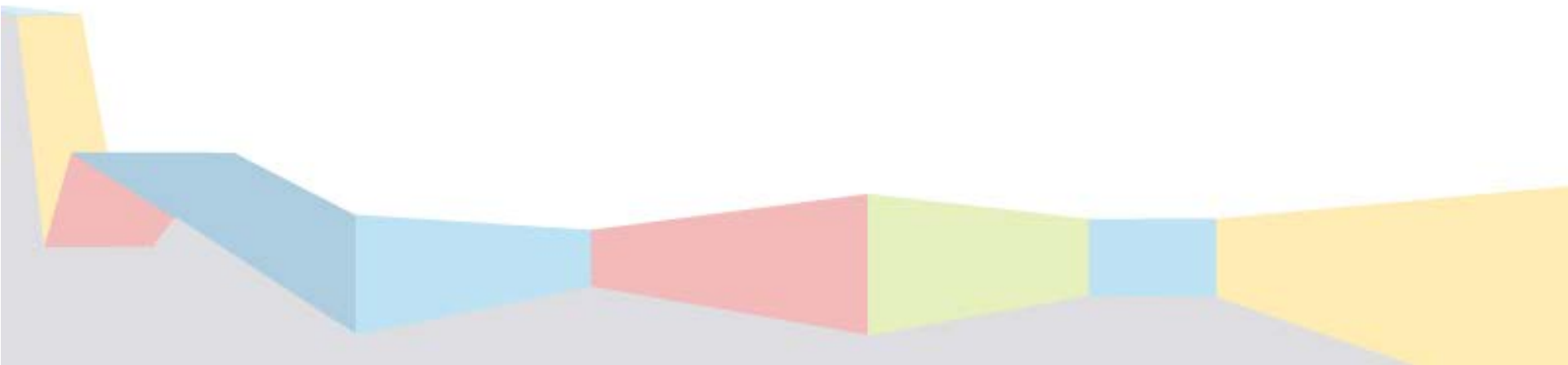
Parent/Guardian

- Get student to school each day
- Support the Teacher & the School
- Encourage Child's Achievement



KCPS 2012-2013 APR Standards

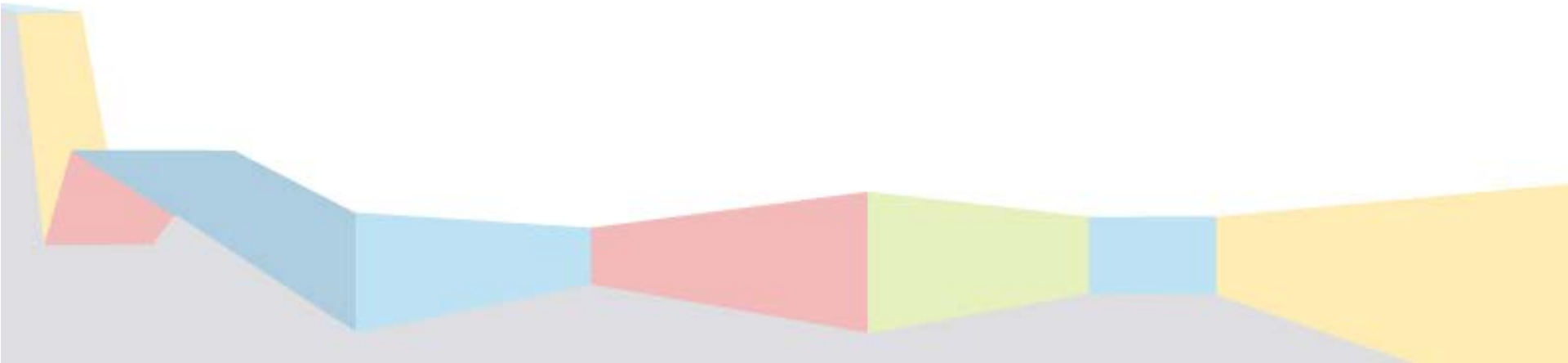
- District Goal
 - To meet 10 standards in 2012-2013 school year



KCPS 2013 APR Targets

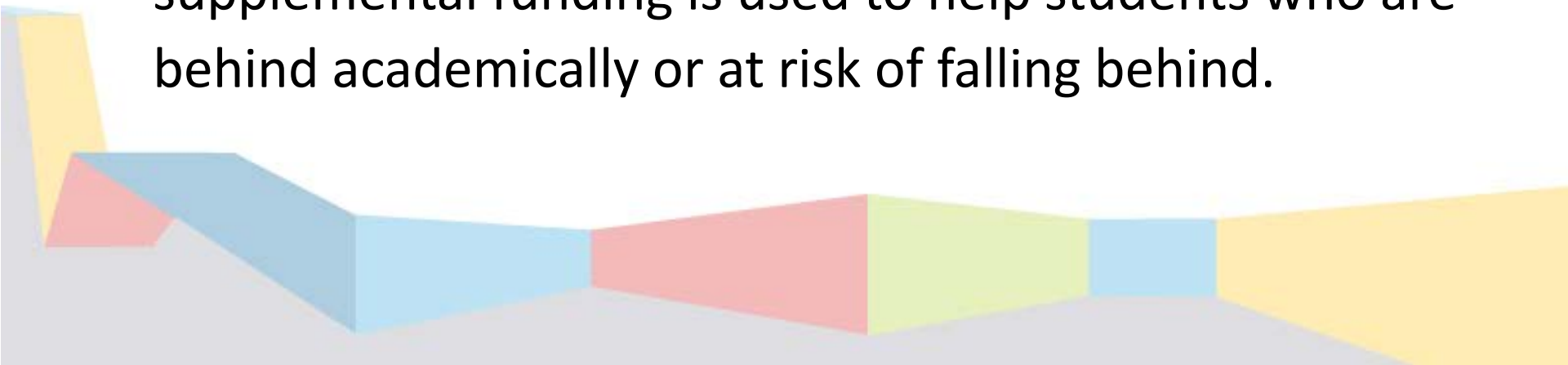
Standard	2012 APR	2012 APR MET	2013 Pts or Pct. Needed	2013 Best Case Projection	Goal
<i>9.1*1 - 3-5 Mathematics</i>	723.5	N	MAP Index of 726.5	Met	726.5
<i>9.1*2 - 3-5 Communication Arts</i>	708	N	MAP Index of 778	Not Met	778
<i>9.1*3 - 6-8 Mathematics</i>	709.1	N	MAP Index of 728	Met	728
<i>9.1*4 - 6-8 Communication Arts</i>	714.9	N	MAP Index of 731 and Gap Bonus	Met	731
<i>9.1*5 - 9-11 Mathematics</i>	710.3	N	MAP Index of 731	Met	731
<i>9.1*6 - 9-11 Communication Arts</i>	740	N	MAP Index of 765 and Gap Bonus Met	Met	765
<i>9.3 - ACT</i>	15.0%	N	40.1% of Graduates at/above Nat'l Average	Not Met	40.1%
<i>9.4*1 - Advanced Courses</i>	47.2%	Y	12.7% of Credits at 11/12 in Advanced Courses	Met	48.2%
<i>9.4*2 - CTE Courses</i>	17.2%	Y	8.5% of Credits at 11/12 in CTE Courses	Met	18.2%
<i>9.4*3 - College Placement</i>	66.3%	Y	23.1% of 2011 Graduates Successfully Placed	Met	67.3%
<i>9.4*4 - CTE Placement</i>	88.7%	Y	11.5% of CTE Completers Successfully Placed	Met	89.7%
<i>9.5 - Graduation Rate</i>	64.3%	N	100% of Cohort Dropouts Recovered	Not Met	85.0%
<i>9.6 - Attendance</i>	91.3%	N	95% Attendance Goal Across all Levels	Not Met	95.0%
<i>BONUS - MAP Achievement</i>	4 out of 6	Y	4/6 Areas of MAP Index Gains in 2013	Met	4
Total Standards Met 2013 - Best Case Scenario				10	
Projected 2013 Accreditation Status				Full Accreditation	

Questions



Four Categories of Schools

- **Non-Title I School:** The percentage of children (within the building) who qualify for free/reduced lunch falls below the district or grade span average.
- **Title I School:** The percentage of children (within the building) who qualify for free/reduced lunch meets and/or exceeds the district or grade span average. The supplemental funding is used to help students who are behind academically or at risk of falling behind.



Four Categories of Schools (Cont.)

- **Focus School:** Focus schools are Title I schools whose Student Gap Groups are among the lowest-performing in the state over the past three years according to state assessment results.
- **Priority School:** A priority school is among the lowest-performing Title I schools in the state for overall student achievement in English language arts and mathematics on state assessments over the past three years.



KCPS Tier Model

Non-Title I Schools					Title 1 Schools				
	Comm Arts Proficiency	Mathematics Proficiency	Combined Proficiency	Attendance		Comm Arts Proficiency	Mathematics Proficiency	Combined Proficiency	Attendance
High School					Elementary				
School 1	85.4	77.0	81.2	95.7	School 1	43.6	58.1	50.9	94.4
School 2	32.5	13.6	23.05	89.0	School 2	30.6	57.2	43.9	94.1
School 3	35.9	6.8	21.35	91.7	School 3	39.4	47.1	43.3	94.5
Elementary					School 4	29.5	52.7	41.1	95.6
School 1	47.5	42.6	45.1	95.9	School 5	29.1	44.3	36.7	97.0
School 2	33.3	42.3	37.8	95.9	School 6	21.9	34.5	28.2	93.5
Focus/SIG Schools					Priority Schools				
	Comm Arts Proficiency	Mathematics Proficiency	Combined Proficiency	Attendance		Comm Arts Proficiency	Mathematics Proficiency	Combined Proficiency	Attendance
High School					High School				
School 1	22.4	14.7	18.6	81.6	School 1	22.1	21.6	21.9	85.2
Elementary					School 2	18.2	13.2	15.7	82.0
School 1	30.5	35.8	33.2	95.0	School 3	14.5	11.3	12.9	80.5
School 2	24.4	29.5	27.0	96.0	Elementary				
School 3	27.1	23.6	25.4	96.4	School 1	26.8	25.0	25.9	92.7
School 4	20.2	30.5	25.4	93.6	School 2	17.6	30.6	24.1	91.0
School 5	21.0	29.4	25.2	95.5	School 3	17.5	19.5	18.5	94.0
School 6	16.7	32.1	24.4	93.0	School 4	10.5	17.3	13.9	93.7
School 7	25.6	18.5	22.1	96.6	School 5	9.0	14.1	11.6	89.4
School 8	14.0	22.5	18.3	92.0	School 6	9.4	13.3	11.4	90.7
School 9	13.8	16.4	15.1	92.6					
School 10	10.2	15.5	12.9	92.4					

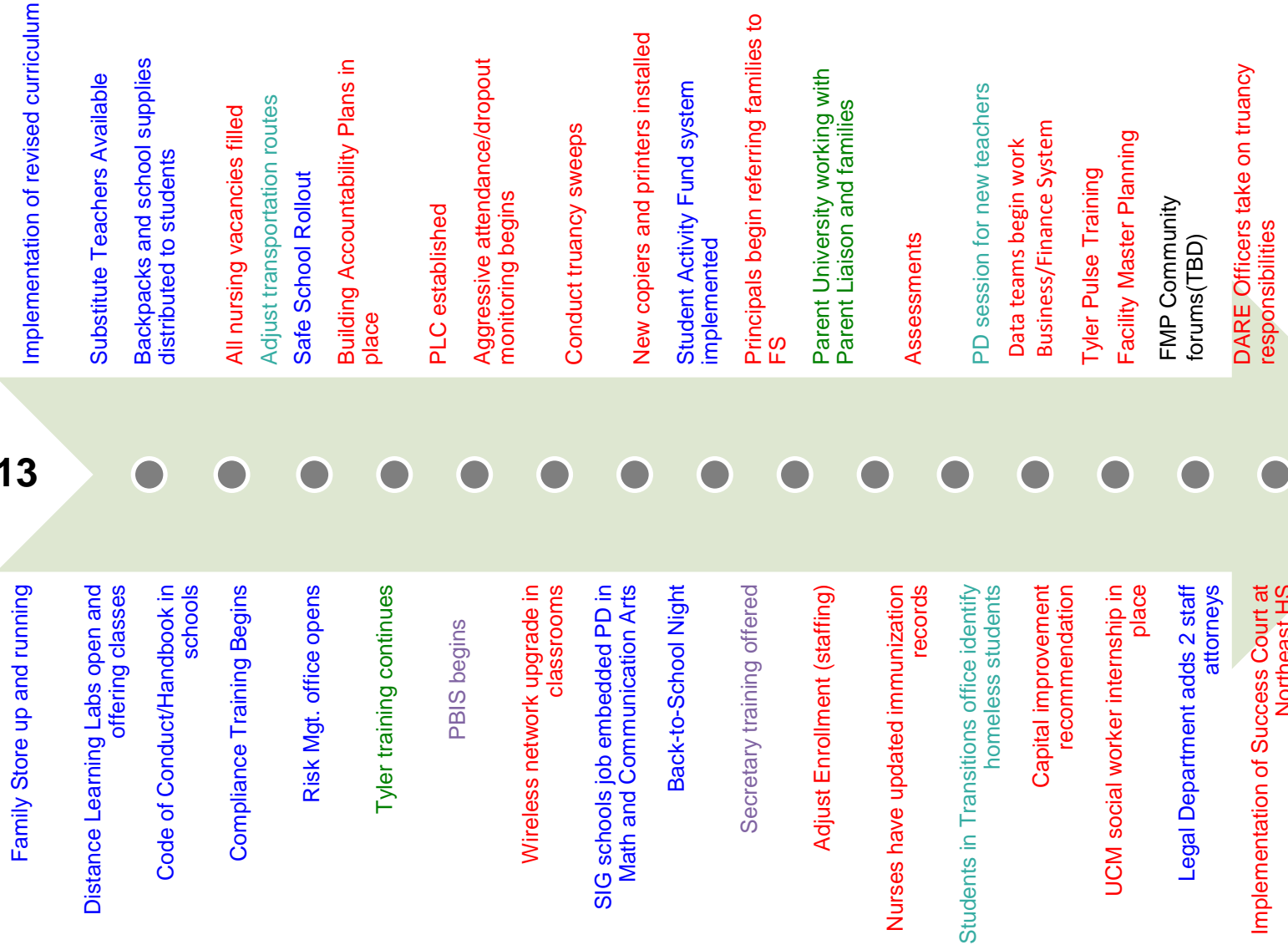
30-Day State of Readiness

August 13 – September 13

- Completed
- In Progress
- On-going
- Completed/In Progress
- TBD

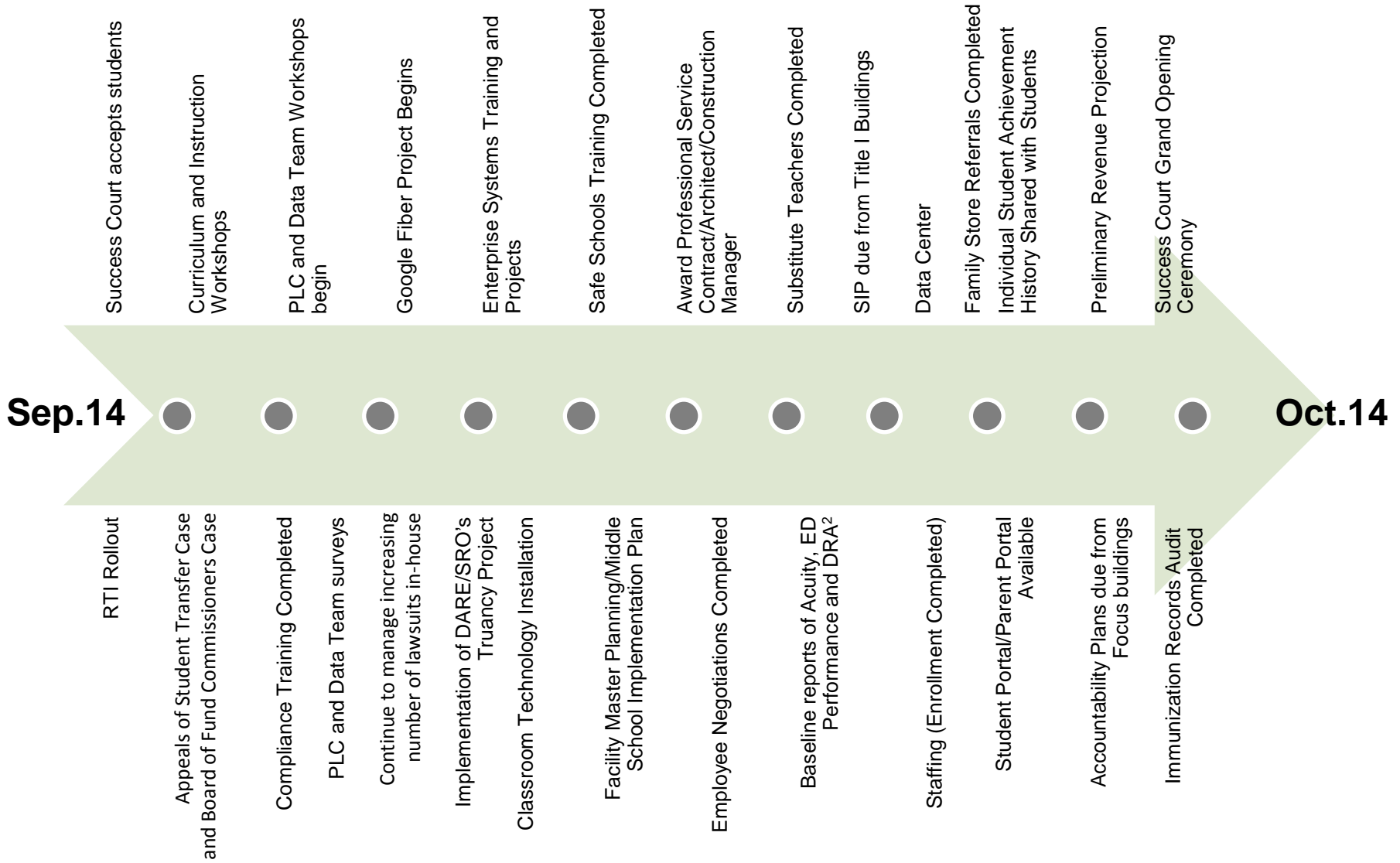
Aug.13

Sept.13

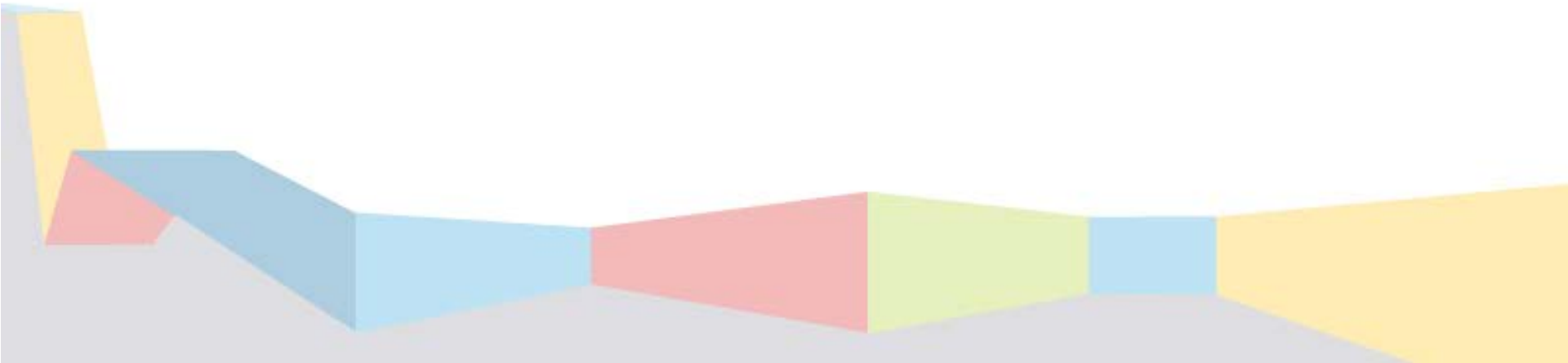


30-Day State of Readiness

September 14 – October 14



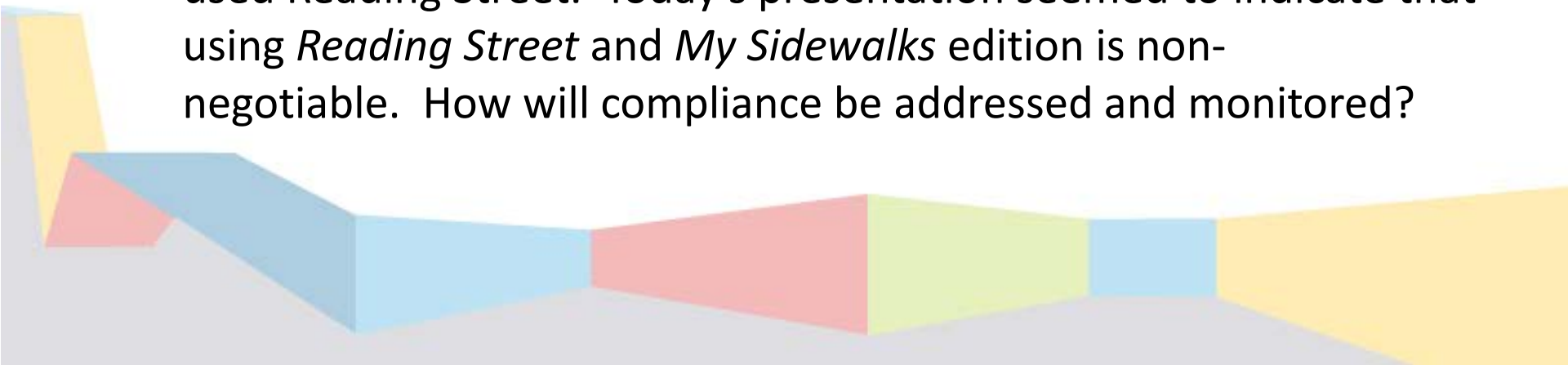
Data Dashboards



Feedback

Questions from blue cards July 2012

1. Perception vs. Reality. Can there be a communication process between Cabinet and principals with regards to the 30-day Plan Data Dashboard?
2. Why aren't retired reading specialists and other available reading specialists, etc., being recruited to fill those positions? Where will the TFA teachers obtain content expertise to qualify as reading specialists?
3. It's my understanding that some teachers in some schools have not used Reading Street. Today's presentation seemed to indicate that using *Reading Street* and *My Sidewalks* edition is non-negotiable. How will compliance be addressed and monitored?



DRAFT - Road to Re-Accreditation Plan - DRAFT

Action Step	Timeline	Resources	Person Responsible	Monitoring Dates	Completion Date	Evidence	Focus Area Alignment	MSIP Accountability Plan Alignment (Objectives)	Strategic Plan Alignment (Strategies)
Implement a ten-week professional development plan to improve teacher pedagogy. The professional development will be focused on developing academic vocabulary and increasing rigor in the classroom.	January 2012 - March 2012	Stipends and Instructional Materials	Lewis Gowin	February 2012	March 2012	PD agendas/ minutes, pre- and post-test scores and state test scores	1	4 and 5	1 and 3
Utilize the data cycle at the school and district level through 'Data Team' meetings to monitor student progress and adjust classroom practices.	January 2012 - May 2013	PD	David Rand	March, May, October and December 2012; March 2013	May 2013	Principal data consult minutes, data team meeting agendas/ minutes, state test scores	1, 2 and 3	6	2 and 3
Develop a curriculum scope and sequence, based on the state Model Curriculum, that aligns to state, national and international standards; emphasizing rigor, student choice and individualization.	August 2012 - May 2013	State model curriculum, stipends, staff and PD	Regina Thompson	November 2012 and March 2013	May 2013	Workgroup sign-in sheets, PD agendas/ minutes and completed curriculum document	1, 2 and 3	4	1, 2 and 3
Provide professional development to teachers on the implementation and use of identified 'best' instructional practice in the classroom.	September 2012 - May 2013	Identified 'best practices' and PD	Lewis Gowin	November 2012 and March 2013	May 2013	PD agendas/ minutes, teacher walkthrough data, state test scores	1, 2 and 3	5	1 and 3
Provide professional development to teachers on the creation of valid and reliable formative classroom assessments and their use to support classroom instruction.	September 2012 - May 2013	PD	David Rand	November 2012 and March 2013	May 2013	PD agendas/ minutes, classroom assessment samples	1 and 3	4, 5 and 6	1, 2 and 3
Implement a behavior management program at each school; document use of behavior data through data team meetings.	September 2012 - May 2013	Identified program, PD	Regina Thompson	November 2012 and March 2013	May 2013	Behavior data, data team agendas/ minutes	2	4, 5, 6 and 7	5 and 8

DRAFT - Road to Re-Accreditation Plan - DRAFT

Action Step	Timeline	Resources	Person Responsible	Monitoring Dates	Completion Date	Evidence	Focus Area Alignment	MSIP Accountability Plan Alignment (Objectives)	Strategic Plan Alignment (Strategies)
Conduct a comprehensive needs assessment for the purpose of establishing a district-wide professional development framework and annual schedule.	March 2012 - May 2012	Surveys and data collection tools	Lewis Gowin	April 2012	May 2012	Completed needs assessment	1, 2 and 3	4 and 5	1, 2 and 3
Implement a district-wide common assessment program.	January 2012 - May 2013	Common assessments	Curriculum Coordinators	March and October 2012; February 2013	May 2013	Revised common assessments, documentation of use through data team meeting agendas/ minutes	1 and 3	4, 5 and 6	1, 2 and 3
Evaluate the efficacy of district implemented programs through a yearly evaluation calendar.	January 2012 - May 2013	Evaluation staff, data collection	Michael Reynolds	March, June and October 2012; March 2013	May 2013	Evaluation calendar, completed evaluations	1, 2 and 3	6	1, 2 and 3
Administer the ACT to all 11th grade students during the school day through the ACT District Choice State Testing (DCST) program.	March 2012	DCST agreement with ACT	David Rand	NA	March 2012	Participation rosters and test results	3	6	2
Implement ACT Explore and Plan testing program at 7th through 10th grades.	January 2012 - May 2013	Testing materials and PD	Lili Englebrecht	April and December 2012	May 2013	Participation rosters and test results	1 and 3	4, 5 and 6	1, 2 and 3

DRAFT - Road to Re-Accreditation Plan - DRAFT

Action Step	Timeline	Resources	Person Responsible	Monitoring Dates	Completion Date	Evidence	Focus Area Alignment	MSIP Accountability Plan Alignment (Objectives)	Strategic Plan Alignment (Strategies)
Create or adopt a course curriculum that emphasizes college and career readiness and post-secondary entry assessments.	August 2012 - December 2012	Money	Lili Englebrecht	October 2012	December 2012	Completed course curriculum	1 and 3	4	1
Complete an 'Individual Graduation Plan' for all current 11th and 12th grade students.	January 2012 - May 2012	Counselor time	Lili Englebrecht	March 2012	May 2012	Sample plans randomly chosen	3	7	1 and 8
Audit high school CTE offerings and use results to ensure high schools are using the CTE program strategically to prepare students for the workforce.	January 2012 - May 2012	Time	Jack Bitzenburg	March 2012	May 2012	Complete list of SY13 CTE offerings and initial enrollments	1 and 3	4	1 and 8
Monitor and increase the number of college applications and FAFSA applications submitted by students.	January 2012 - May 2012	Counselor time and tracking document	Lili Englebrecht	March 2012	May 2012	Reported numbers of applications by school	3	7	1 and 8
Expand early college and dual credit offerings at each high school.	September 2012 - May 2013	Higher ed partnerships	Mark McBeth	November 2012 and March 2013	May 2013	Enrollments in early college and dual credit courses	1 and 3	4	1 and 8
Audit cohort dropout lists for SY12, SY13, SY14 and SY15 and update core data files reflecting recovered dropouts.	January 2012 - May 2012	Community partnerships, time	David Rand	March 2012	May 2012	SY12 Graduation Rate and number of dropouts recovered	3	7	8
Create a protocol and establish a tracking system for documenting and reporting the Office of Student Support's efforts for dropout prevention and increasing student attendance.	January 2012 - May 2012	Staff, time	Luis Cordoba	March 2012	May 2012	Annual graduation rate and number of dropouts recovered.	3	7	5 and 8

Questions and Answers

RSIT Breakout Discussion

Feedback/Requests

Monthly Meeting Date