

Daniel Morgan Boone Park Green Infrastructure Project

Pershing School Proposal
March 10, 2025



Agenda

- Introductions
- Smart Sewer Program Overview
- DMB Park Green Infrastructure Project Overview
- Pershing School Site
- Proposed Site Layout
- Community Benefits



Team Introductions



Andy Shively
KC Water



Miranda Hamrick
Burns & McDonnell

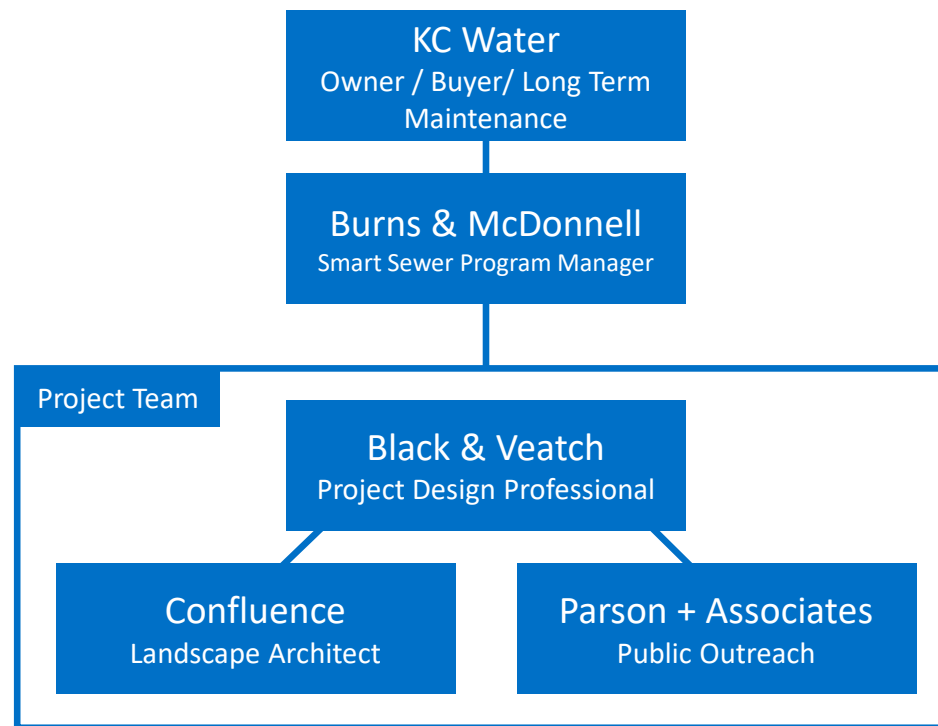


Laura Adams
Black & Veatch



Matt Scott
Black & Veatch

Team Roles



Smart Sewer Program Goals

Improve the public health and the environment
cost-effectively by:

- Investing \$4 billion in the City's infrastructure
- Separating combined sewers through sewer separation
- Constructing green stormwater infrastructure

The Pershing School site helps KC Water cost-effectively achieve all three of these goals



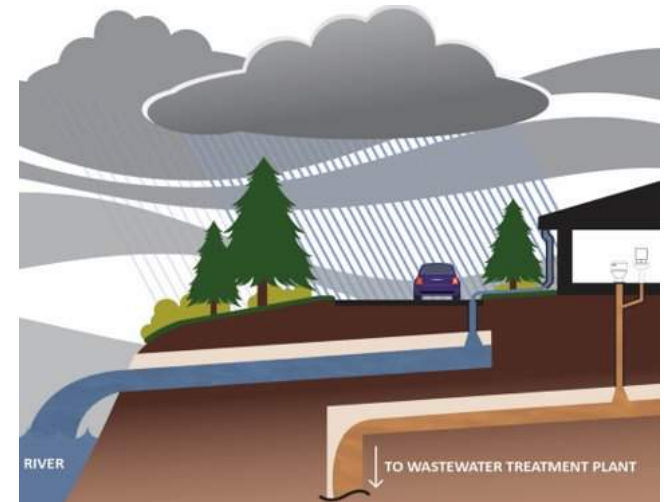
Combined Sewer Separation



Current, Dry Weather



Current, Wet Weather



Future, Wet Weather

What is Green Infrastructure?

Green infrastructure helps our community manage stormwater the way nature intended by capturing and utilizing rainwater where it falls.



Arleta Park Green Infrastructure

It decreases the amount of water getting into our pipes, improves water quality, and reduces flooding, pollution, and trash in our creeks, streams, and rivers.



Outfall 054 Green Infrastructure

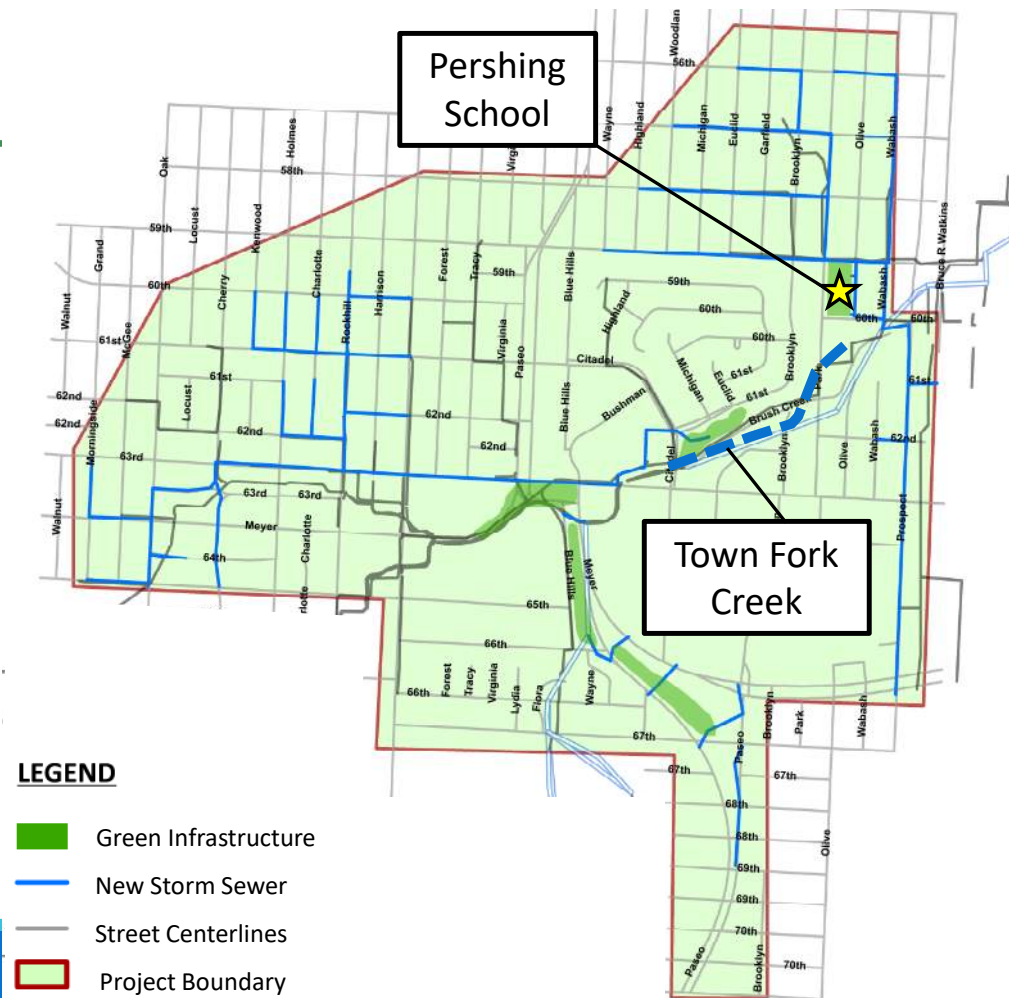
KC Water's Green Infrastructure Program

- Pershing School would provide an additional 61 green acres on a 3.5 acre site



Daniel Morgan Boone Park Green Infrastructure Project

- Significantly reduces combined sewer overflows to Town Fork Creek
- Location:
 - **North:** 55th Street
 - **South:** East Gregory Boulevard
 - **East:** U.S. 71 Highway
 - **West:** Morningside Drive
- Total estimated investment between \$80M and \$100M



Why Pershing School?



Why this site?

- Opportunity to extend the impact of investment for the Daniel Morgan Boone Park project
- Capturing stormwater at Pershing School is cost-efficient
- Improves the quality of water in Town Fork Creek
- Contributes 61 green acres to required 480 green acres

LEGEND

- Green Infrastructure
- New Storm Sewer
- Street Centerlines
- Project Boundary



Conceptual Site Layout



Green Infrastructure Site

- Remove Pershing School building and create open public green space for the community



Green Infrastructure Site

- Remove Pershing School building and create open public green space for the community
- Underground storage chambers for temporary stormwater storage



Outfall 054 Green Infrastructure



Community Benefits



Community Green Space

- Reduced heat island impacts
- Improved air quality
- Option for **community to add amenities, dependent on other funding sources**



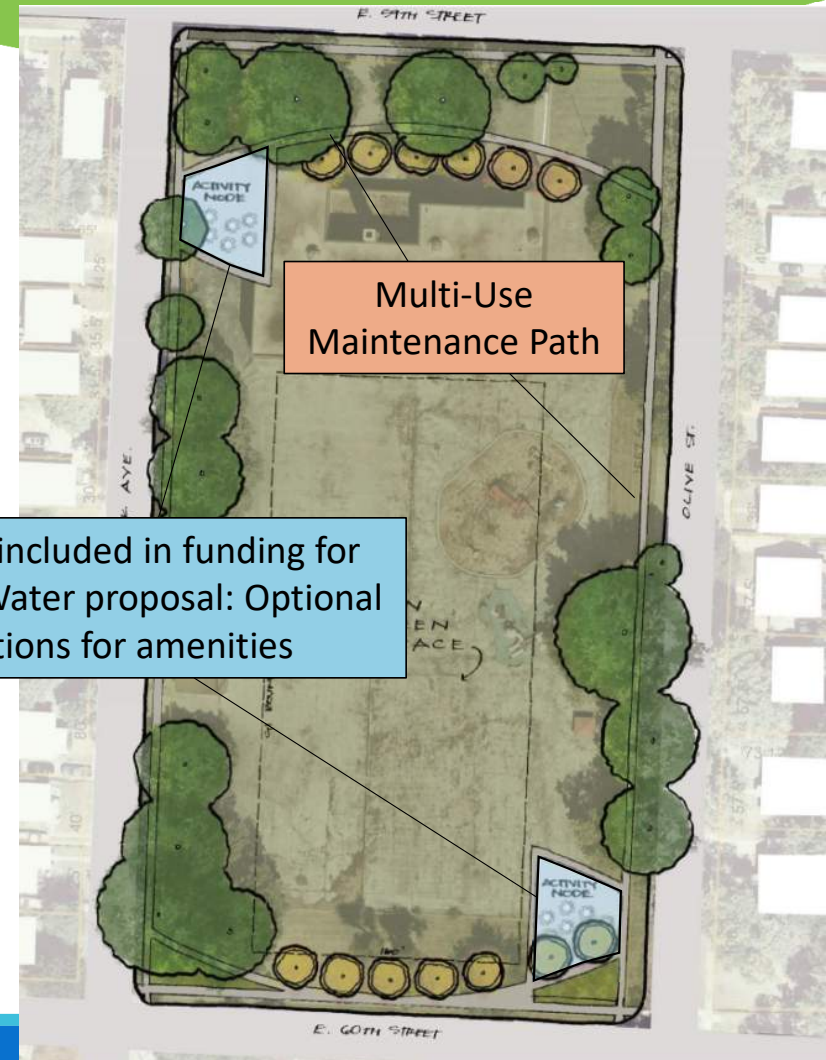
Multi-Use Maintenance Path

- Accessible to the public
- Allows KC Water maintenance access to stormwater infrastructure



Cost-Effective CSO Reduction

- Daniel Morgan Boone Park project
- Pershing School located ideally
- Cost-efficient to implement green acres here while construction is ongoing




Proposed Schedule

- Schedule
 - Due diligence / contingencies led by KC Water Property Acquisition
 - Design schedule:
 - Start design - 2025
 - Finish design - 2026
 - Anticipate construction start in 2027 & finish 12 months thereafter
 - Includes neighborhood stormwater improvements to separate combined sewers



Financing – Project Funding Identified

- Proposed improvements funded entirely by KC Water and currently in KC Water's Capital Improvements Plan
 - Future maintenance will be provided by KC Water as part of overall program green infrastructure maintenance
- 



KC Water is ready to move forward and
has the **team** in place, **qualifications**,
and **funding** to deliver this **critical**
community project.

